

PRIVATE COLLECTION  
OF THE LATE  
ALEXANDER BLUMENSTIEL

AMERICAN ART GALLERIES  
MADISON SQUARE SOUTH  
NEW YORK

LIBRARY OF THE  
JOHN G. JOHNSON COLLECTION  
CITY OF PHILADELPHIA













Digitized by the Internet Archive  
in 2013

<http://archive.org/details/watecoldraw00amer>



ILLUSTRATED CATALOGUE  
OF THE  
PRIVATE COLLECTION  
OF  
MODERN PAINTINGS  
WATER COLORS AND DRAWINGS

COLLECTED BY THE LATE

ALEXANDER BLUMENSTIEL

TO BE SOLD AT UNRESTRICTED PUBLIC SALE  
BY ORDER OF HIS EXECUTORS

AT MENDELSSOHN HALL  
FORTIETH STREET, EAST OF BROADWAY

ON THE DATES HEREIN STATED

THE SALE WILL BE CONDUCTED BY  
THOMAS E. KIRBY  
OF THE AMERICAN ART ASSOCIATION, MANAGERS  
NEW YORK: 1906

Press of J. J. Little & Co.  
Astor Place, New York

CATALOGUE



# FIRST EVENING'S SALE

THURSDAY, FEBRUARY 15, 1906

AT MENDELSSOHN HALL

BEGINNING PROMPTLY AT 8.15 O'CLOCK

## DRAWINGS

No. 1

ADOLPH MENZEL

GERMAN

1815—1905

## SKETCHES

Pencil Drawing

THE face of an old man, the head and shoulders of a young man and a young woman, and an ear nearly life size.

*Signed at the lower right, MENZEL, A. M. '97.*

*Height,  $7\frac{1}{4}$  inches; width,  $4\frac{3}{4}$  inches.*

No. 2

ADOLPH MENZEL

GERMAN

1815—1905

THREE HEADS

Drawing

A STUDY of three heads in stump and crayon, the two lower ones showing pleasing types of young ladies in hats and garments of modern fashion, and above them, partly concealed by the face and hat of the young lady on the right, is the head of a youth.

*Signed at the upper right, B. MENZEL.*

*Height, 8 inches; width, 5 inches.*

No. 3

ALPHONSE MARIE DE NEUVILLE

FRENCH

1836—1885

MARCHING ACROSS THE DESERT

Drawing

A SKETCH, partly in pencil and partly in ink, of an Arab expedition with many horsemen and riders on camels, proceeding in irregular formation across the desert.

*Signed at the lower left, A. DE NEUVILLE.*

*Height, 5 inches; length, 8 inches.*

No. 4

M<sup>L</sup>L<sup>E</sup>. ROSA BONHEUR

FRENCH

1822—1899

CATTLE

Drawing

A DRAWING of cows and a calf in a broad level pasture. Two cows are lying down on either side of a third which stands near her young calf.

*Signed at the lower right, ROSA B.*

*Height, 8 inches; length, 11½ inches.*

No. 5

ISAAC ISRAELS

DUTCH

1824—

STREET SCENE

Pencil Drawing

IN the right foreground is suggested the figure of a market woman with a white apron over a black dress. Beyond her is a crowd of people walking along the street, and on the left a view of a sunlit façade.

*Signed at the lower left, ISAAC ISRAELS.*

*Height, 4½ inches; length, 6 inches.*

No. 6

M<sup>LLE</sup>. ROSA BONHEUR

FRENCH

1822—1899

## SKETCHES

### Drawings

FOUR pencil sketches in one frame. The upper one shows various studies of figures, a large farm wagon, evidently sketches for a picture, representing cider making. On the lower left of the sheet is pasted a composition showing a shepherd leading a flock of sheep across an open pasture. Not signed.

*Height, 9½ inches; length, 15¾ inches.*

The drawing at the lower left is a pencil sketch of a farmyard with a wagon load of hay drawn by a yoke of oxen, and various cattle and laborers at rest on either side.

*Signed at the lower right, ROSA B.*

*Height, 4¼ inches; length, 9 inches.*

The sheet at the lower right shows a cart horse feeding out of a nosebag.

*Signed at the lower right, ROSA B.*

*Height, 5 inches; length, 6 inches.*



No. 7

JEAN LÉON GÉRÔME

FRENCH

1824—1904

DRAWING IN RED CHALK

Drawings

THIS is a study in red chalk of the full-length figure of a young woman in the costume of the Far East, reclining at full length on the floor, supporting her shoulders on soft cushions. Her head rests upon her right hand, and her left, extending along her side, holds an oval mirror.

*Signed at the lower right, J. L. GÉRÔME.*

*Height, 7 inches; length, 14 inches.*

M<sup>L</sup>LE. ROSA BONHEUR

FRENCH

1822—1899

SKETCHES

Drawings

FOUR leaves from the notebook with sketches of lions. The smallest shows a lioness walking along, the next two lions' heads, the third four male lions lying together, and the largest a lion and lioness sleeping.

Lioness.

*Signed at the lower left, ROSA B.*

*Height, 4¼ inches; length, 5 inches.*

Lions' heads.

*Signed at the lower right, ROSA B.*

*Height, 4 inches; length, 4¾ inches.*

Four lions lying down.

*Unsigned.*

*Height, 6 inches; length, 9½ inches.*

Lion and mate lying down.

*Signed at the lower left, ROSA BONHEUR.*

*Height, 8 inches; length, 14¾ inches.*

PASTELS AND WATER COLORS

No. 9

LOUIS EUGÈNE BOUDIN

FRENCH

1824—1898

AT VILLERVILLE

ON a grassy elevation in the foreground are two cows, one standing, the other lying down. Beyond them is a view across the broad mouth of the Seine, with various fishing boats and the headland near Havre.

*Signed at the lower right, E. BOUDIN, '58.*

*Height, 7 inches; length, 11 inches.*

No. 10

LOUIS EUGÈNE BOUDIN

FRENCH

1824—1898

SEA AND SKY

Pastel

THIS is a study of the Channel on a summer's day, with large cumuli lazily floating in the quiet air, and in the foreground the sea gently breaking upon a shallow shore.

*Signed at the lower left, E. B.*

*Height, 7 inches; length, 10½ inches.*

No. 11

F. GABRIEL

LANDSCAPE

Water Color

A NUMBER of thatched hovels are grouped together near a rank of tall trees, under which, in the right of the composition, passes a country road. The light in the sky is concentrated near the horizon, and the soft clouds are tinged with rosy evening light.

*Signed at the lower left, GABRIEL F.*

*Height, 9 inches; length, 13½ inches.*

No. 12

E. ESBENS

GERMAN

AT THE PALACE GATE

Water Color

THIS is the figure of a Turkish messenger who has brought to the palace door a large branch of palm which he has leaned against the corner of the wall. He is dressed in a white turban over a red fez, a pink-striped blouse with a black and white jacket, and full brown trousers.

*Signed at the lower right, E. ESBENS.*

*Height, 11½ inches; width, 8 inches.*

No. 13

ALBERT LYNCH

FRENCH

1851—

A DRAWING-ROOM ENTERTAINMENT

Water Color

ON a temporary platform, erected in a large drawing-room, a pierrot is serenading, with a guitar, a young lady who, perched on a chair, looks through an opening in the top of a screen. Behind the pierrot is a large attendance of ladies and gentlemen, some seated and some standing.

*Signed at the lower right, ALBERT LYNCH.*

*Height, 16 inches; width, 11 inches.*

No. 14

LOUIS EUGÈNE BOUDIN

FRENCH

1824—1898

A BRETON INTERIOR

Water Color

A SKETCH, partly in monochrome and partly in pencil, of the seated figure of a peasant woman in a simple Brittany interior. In the background various articles of domestic furniture are suggested, and on the left of the figure, which is strongly illuminated by a window, is a heavy table.

*Signed at the lower left, E. B.*

*Height, 5½ inches; length, 7½ inches.*

No. 15

ALBERT LYNCH

FRENCH

1851—

AN EVENING CALL

Water Color

A YOUNG lady and a young girl are seated near a large lamp, the latter attentively engaged in sewing on a white garment, the other welcoming with a smile two gentlemen in evening dress who are entering the room beneath a heavy portière.

*Signed at the lower right, ALBERT LYNCH.*

*Height, 15½ inches; width, 10½ inches.*

No. 16

H. P. ARNTZENIUS

DUTCH

Contemporary

STREET SCENE

Water Color

THE motive of this picture is undoubtedly found in the Latin quarter where the narrow streets are thronged with foot passengers and where every manner of Parisian is seen. In the right foreground is a baker's boy carrying a large basket, and beyond him are various types, from the laboring man in blue blouse to the boulevardier in tall hat accompanied by a young lady. Between the high façades on either side of the street is seen at the top of the picture a portion of luminous gray sky. *Signed at the lower right, H ARNTZENIUS.*

*Height, 19½ inches; width, 15 inches.*





## OIL PAINTINGS

No. 17

L. SIMON

### LANDSCAPE

THIS is a wide prospect over a pleasant country where a narrow river runs from the left foreground diagonally to the right and disappears among the meadows. Suggestions of its course are seen along a line of low bluffs in the middle distance. The horizon is formed by a range of wooded hills, and the sky is filled with luminous clouds.

*Signed at the lower right, L. SIMON.*

*Height, 6 inches; length, 9½ inches.*

No. 18

LOUIS ÉMILE ADAN

FRENCH

1839—

### THE SLY BUTLER

A MIDDLE-AGED butler in ornate livery of red velvet, trimmed with blue galloon, is taking his ease in an armchair, and is raising to his lips a partly emptied bottle which he has taken from a table at his elbow. Through a partly opened door at the back behind the butler appears the face of the mistress of the house bearing an expression of pained surprise.

*Signed at the lower right, L. ÉMILE ADAN.*

*Height, 14½ inches; width, 10 inches.*

No. 19

E. ESBENS

GERMAN

### THE PALACE GUARD

A DARK-SKINNED Arab, in flowing yellow, white and red garments, is seated upon a rough stone step at the entrance to a Moorish palace, his ornamented flintlock gun resting in an angle of the wall. On the right of the figure is a wooden gateway, through which is a glimpse of the blue sky and a sunlit wall.

*Signed at the lower right, E. ESBENS.*

*Height, 10½ inches; width, 8 inches.*

No. 20

ANTONIO TAMBURINI

ITALIAN

1843—

THREADING THE NEEDLE

AN old Dominican monk, seated at a table on which lies an umbrella with its covering out of repair, endeavors to thread a needle, holding it up with both hands against the light. He is looking over the tops of his clumsy spectacles, and, with wide-open mouth, holds his breath lest his fingers should shake at the critical moment.

*Signed at the upper left, A. TAMBURINI, FLORENCE.*

*Height, 14 inches; width, 11 inches.*

No. 21

ANTONIO CASANOVA Y ESTORACH

SPANISH

HEAD

THIS is a study of an old Franciscan monk who sits with head somewhat lowered, apparently about to eat some hot food. The head is carried far toward completion, but the rest of the picture is only sketched, showing well the method of the artist.

*Inscribed at the left, VENTE ANTONIO CASANOVA Y ESTORACH.*

*Height, 15 inches; width, 12 inches.*

No. 22

JAMES M. HART, N.A.

AMERICAN

1828—1901

## SUMMER

A BROAD, placid stream flows diagonally across the picture, and in it various cattle are standing, some drinking, others cooling themselves in the water. On the right a clump of trees rises from a low grassy bank. Across the river in the middle distance is a parklike meadow, with scattered trees and cattle browsing on the grass and standing in the shallows. The sky is partly covered by loosely drifting summer clouds.

*Signed at the lower right, JAMES M. HART.*

*Height, 21 inches; width, 16 inches.*

No. 23

LEONARD OCHTMAN

AMERICAN

1854—

## LANDSCAPE

A LOW, grassy meadow stretches across the foreground and gently slopes down to the shore of a quiet inlet. On the right, beyond the meadow, stand two simple buildings surrounded by trees, and farther away, following the indented shore-line, the eye is carried to a large village at the mouth of the inlet, beyond which is visible an expanse of the sea.

*Signed at the lower left, LEONARD OCHTMAN, '93.*

*Height, 16 inches; length, 22 inches.*

No. 24

M. COULAND

FRENCH

Contemporary

### THE BARNYARD

IN the foreground a number of sheep are drinking out of a tub which stands in a barnyard adjoining a small farmhouse. The group is in strong sunlight falling from the upper right, and beyond them is seen, in the luminous shadow, a peasant woman feeding a number of sheep with freshly cut grass. The roof of the farmhouse and the open shed adjoining rise nearly to the top of the picture.

*Signed at the lower right, M. COULAND, 1902.*

*Height, 21½ inches; width, 18 inches.*

No. 25

CARLETON WIGGINS, N.A.

AMERICAN

1848—

### THE AFTER GLOW

A SINGLE black and white spotted cow stands in the foreground on the slope of a rich pasture, and beyond her is a view across a wide and well-wooded country toward the distant horizon, where the sky line is lost in a veil of mist. The upper segment of the full moon shows through the clouds beyond the cow, and the whole landscape is glowing with the light of late sunset

*Signed at the lower left, CARLETON WIGGINS.*

*Height, 22 inches; width, 18½ inches.*

No. 26

M. TEN KATE

DUTCH

1831—

CHILDREN AT PLAY

THREE children, a boy and two girls, are playing with rabbits in the corner of a cottage yard. Grouped around the smallest child, who is seated on the ground, are half a dozen of the pet animals, one of which she is fondling. On the right a rustic fence separates the yard from a garden beyond.

*Signed at the lower right, M. TEN KATE.*

*Height, 16 inches; length, 24 inches.*

No. 27

JEAN BAPTISTE ROBIE

FRENCH

1821—

ROSES

THIS is a study of three deep pink roses seen in a strong light against a dull gray background.

*Signed at the lower left, 20 MAI, 1874, J. ROBIE.*

*Height, 8½ inches; length, 11½ inches.*

No. 28

LOUIS EUGENE BOUDIN

FRENCH

1824—1898

LANDSCAPE

THIS is a sketch of a marsh along the sea. An irregular shoreline, broken by small bunches of reeds and small grassy points, sweeps away from the foreground to the distance where there is a suggestion of low hills forming the horizon. In the right foreground is a small area of rough marsh, and beyond it, in the water, a pile and pieces of floating timber.

*Signed at the lower left, E. B.*

*Height, 8 inches; length, 12 inches.*

No. 29

M<sup>LLE</sup>. ROSA BONHEUR

FRENCH

1822—1899

A BLACK SHEEP

THIS is a study of a full-grown sheep with black face and legs, short backward curling horns, and moderately heavy wool, dun brown in color. The sunlight strikes strongly upon the animal from the upper left, throwing a deep shadow on the grass against which the figure is relieved.

*Signed at the lower right, ROSA BONHEUR.*

*Height, 8 inches; length, 11 inches.*

No. 30

HENRI HARPIGNIES

FRENCH

1819—

### SPRINGTIME

IN the foreground a lover and his lass recline under a tall, slender tree, and beyond them is a pleasant sunlit valley, winding down to the distance between partially wooded slopes.

*Signed at the lower left, H. HARPIGNIES, '74.*

*Height, 6 inches; width, 3½ inches.*

No. 31

IVAN POKITONOW

RUSSIAN

Contemporary

### THE GARDENERS

IN the foreground is seated a gardener dressed in white, and beside him stand two well-filled flower pots. Nearby is a small boy, bearing a basket on his head, evidently receiving orders from the gardener. Between the two figures leads a sandy path, with various turnings, to an arched gateway in the distance. Beyond straggling clumps of fruit trees in the middle distance on the left is the façade of a solitary building, and just beyond the two figures on the edges of the path stands a two-wheeled cart with poultry resting in the shadow.

*Signed at the lower right, I. POKITONOW.*

*Height, 6½ inches; length, 10 inches.*



No. 32

E. BERNE-BELLECOUR

FRENCH

1838—



SOLDIER WITH FLOWERS

A FRENCH infantryman in full uniform, with sabre by his side, having plucked a large bunch of wild flowers, is busily engaged in tying the bunch together. He stands in a grassy field near a village, the roofs of which are seen just beyond him.

*Signed at the lower left, E. BERNE-BELLECOUR.*

*Height, 15½ inches; width, 11½ inches.*

No. 33

ANTONIO CASANOVA Y ESTORACH

330

SPANISH

THE TEST

Two monks, who find duty very pleasant in the kitchen, are engaged in roasting a leg of mutton in a Dutch oven. One of them winds up the clockwork which revolves the spit and the other is tasting the gravy.

*Signed at the upper left, ANTONIO CASANOVA Y ESTORACH, PARIS, 1896.*

*Height, 13 inches; length, 16 inches.*

No. 34

JEAN BAPTISTE ROBIE

FRENCH

1821—

250

FLOWERS

A BUNCH of large roses, yellow, salmon pink and red, are thrown carelessly down upon the grass, and, strongly lighted from the upper left, contrast with the indefinite green of the landscape beyond.

*Signed at the lower right, J. ROBIE, 1884.*

*Height, 16 inches; width, 13 inches.*

No. 35

JEAN LÉON GÉRÔME

FRENCH

1824—1904

1075

THE SENTINEL

AN Albanian, in full native costume, stands near the doorway of what is apparently a guard-house. He wears a salmon pink jacket, a white fustanella and green sash, and carries two pistols and a yataghan in his broad leather belt. In the gloom of the interior, on the right of the figure, is seen a companion similarly dressed, who is conversing with two men, apparently prisoners.

*Signed at the lower left, J. L. GÉRÔME.*

*Inscribed at the upper left, A MR. BLUMENSTIEL, J. L. GÉROME.*

*Height, 12½ inches; length, 15¾ inches.*

*Presented by M. GÉROME to the late owner.*

No. 36

ÉTIENNE ADOLPHE PIOT

FRENCH

Contemporary

327

HEAD

A FULL life-size study of a dark-haired maiden seen in *profil perdu*, with head upraised and eyes turned in the same direction. Her bust is partly draped with a diaphanous mantle, and in her raised right hand she clasps a few roses to her bosom.

*Signed at the left, A. PIOT.*

*Height, 15 inches; length, 18 inches.*

*From the ARTIST.*

No. 37

JEAN FRANÇOIS RAFFAELLI

FRENCH

1850—

250

AFTER A WALK

A WELL-TO-DO middle-class Frenchman is seated on a rude wooden bench near the borders of a stream, holding in his hands a newspaper which he has just finished reading. Beyond the figure and across the stream is a pleasant grove of trees, with the suggestion of a residence among them, and on the right a skiff with a single fisherman.

*Signed at the lower right, J. F. RAFFAELLI.*

*Height, 12 inches; length, 18 inches.*

No. 38

HIPPOLYTE CAMILLE DELPY

FRENCH

Contemporary

### LANDSCAPE

IN the foreground, on the low, grassy shore of a broad river, a group of women are engaged in washing clothes. In the middle distance on the right is a small village partly surrounded by trees, with an old stone keep and a simple, lofty church with a belfry. On the left, across the stream, poplars and other trees grow upon the shore, and beyond them is a line of low, cultivated hills forming the horizon. Masses of warm-colored clouds drift across the sky near the horizon and float high in the heavens.

*Signed at the lower right, H. C. DELPY, '98.*

*Height, 17½ inches; length, 28 inches.*

No. 39

BAREND CORNELIS KOEKKOEK

DUTCH

1803—1862

340

SKATING SCENE

FROM the right foreground a frozen stream stretches away to the distance. On the right are a few cottages dominated by a steep-roofed circular tower, and on the left a clump of leafless trees growing among the underbrush on the bank of the stream. The surface of the ice is busy with skaters, and a few wayfarers proceed along a road on the left bank of the stream. Cumulus clouds float high in the sky, their edges touched by a soft winter sunlight.

*Signed at the lower right, BK 1849.*

*Height, 22½ inches; length, 29 inches.*

No. 40

HIPPOLYTE CAMILLE DELPY

FRENCH

Contemporary

270

### THE BACKWATER

FROM the left foreground a backwater extends to the right under tall, slender trees, and forms a branch of the river which is seen in a shimmering expanse on the left. A number of fishing boats are moored to the banks of the backwater. Near a clump of trees in the middle of the composition a single fisherman is standing up in his boat ready to cast his line. A few clouds, their edges touched by the sunset glow, drift across the sky.

*Signed at the lower right, H. C. DELPY.*

*Height, 16½ inches; length, 29½ inches.*

No. 41

ADOLF ECHTLER

AUSTRIAN

Contemporary

260

### THE REPENTANT SINNER

A MAIDEN and her lover have been strolling in the woods and are discovered there by a party of three Franciscan monks, the foremost of whom stands near the youth apparently reading him a severe lecture. The maiden is seated on the grass, hanging her head shamefacedly. A small area of luminous sky is seen at the top of the picture and some birds flutter about among the tree tops.

*Signed at the lower left, AD. ECHTLER, PARIS.*

*Height, 25 inches; width, 18 inches.*



No. 42

ANTOINE VOLLON

FRENCH

1833—1890

1100

### FLOWERS AND FRUIT

RED and white roses, in a coarse earthen jar with a handle at the top, are in strong light against a background of deep-colored foliage. On the table nearby are cherries, plums and pruning shears. The fruit and flowers are natural size and are strongly lighted from the upper left.

*Signed at the lower left, A. VOLLON.*

*Height, 19½ inches; length, 23½ inches.*

No. 43

FRITZ THAULOW

NORWEGIAN

1847—

GREEN-HOUSES

42

THIS is a study of a nursery establishment somewhere in the vicinity of a large town. In the foreground are beds of pansies and other flowers and a clump of rose trees in blossom. In the middle distance is an irregular group of glass houses with forcing beds alongside, and beyond is seen a wooded hillside with various red-roofed buildings, smoking chimneys and church towers.

*Signed at the lower right, FRITZ THAULOW.*

*Height, 21½ inches; length, 29 inches.*

No. 44

RICHARD WILSON

ENGLISH

1714—1782

ENGLISH LANDSCAPE

THE composition is classical in aspect and shows a grassy bank in the foreground stretching away to the left, where it meets the foot of a crag on which are perched the buildings of a large town. Two figures form a prominent object in the foreground, one seated and one standing. Across a broad lake are seen wooded hillsides crowned with villas, and, in the remote distance, a symmetrical mountain peak rising against a quiet summer sky, across which are drifting clouds of smoke or steam, which rise from the valley just beyond the water.

*Height, 16½ inches; length, 21 inches.*





No. 45

JULES WORMS

FRENCH

1837—

scw

LE POURBOIRE

A TRAVELLER, who is just about to leave the inn where he has been sojourning, is beset by a housemaid and a porter, each of whom holds out an eager hand. A gayly caparisoned mule is held by the maiden and the young traveller seems more inclined to cross her palm than to reward the man for his services.

*Signed at the lower left, J. WORMS.*

*Height, 17 inches; length, 21½ inches.*

No. 46

SIR JOSHUA REYNOLDS

ENGLISH

1723—1792

4 w

## HEAD

THIS is a life-size study of a youth's head, lighted after the manner of Rembrandt. It is in three-quarters view to the left, and the face is partly shaded by a broad-brimmed hat, the light being concentrated on the lower part of the face and flickering strongly on a steel gorget which surrounds his neck. The background is a simple tone of brown.

*Height, 16½ inches; width, 13 inches.*

*From BOUSSOD, VALADON & Co.*

No. 47

FÉLIX ZIEM

FRENCH

1821—

4/0

CONSTANTINOPLE

THIS is a sketch for a picture evidently made in some part of the Adriatic. In the foreground is a bank shelving down to a broad harbor, and various figures in brilliant costumes are seated on mats in the left foreground, while two companions are dancing and gesticulating in front of them. On the left a single slender tree with a rounded tuft of foliage at the top rises high above the undergrowth with which it is surrounded.

*Signed at the lower right, ZIEM.*

*Height, 15 inches; length, 18 inches.*

No. 48

GUSTAVE COURBET

FRENCH

1819—1878

100

A SWISS SCENE

A CURIOUS rustic mill, partly of masonry and partly of wood, stands at the foot of a moderate-sized cliff partly overgrown with bushes, from which a tiny stream, led through a wooden conduit, flows upon an overshot wheel. The mill-stream flows around toward the left of the foreground and out of the picture. On the right slender trees rise against a forest behind them. The sky is covered with soft luminous clouds.

*Signed at the lower right, G. COURBET, '76.*

*Height, 22 inches; width, 18 inches.*



No. 48. *A Swiss Scene.* By GUSTAVE COURBET





No. 49

LOUIS EUGÈNE LAMBERT

FRENCH

Contemporary

5-20

### CAT AND KITTENS

THE mother cat, accompanied by three small kittens, has been playing with a basketful of colored wools, and the four, surprised at their game, stare at the spectator. The background is a panelled wainscot, and on the left is a basket from which the cat and kittens have dragged a tangle of colored wools which surrounds them.

*Signed at the lower right, L. EUG. LAMBERT.*

*Height, 19 inches; length, 24 inches.*

*From the ARTIST.*

No. 50

MARIANO FORTUNY

SPANISH

1838—1874

625

COURTYARD OF HOUSE IN MADRID

THIS is a sketch of a Spanish patio in a strong effect of light and shade. An open shed-like building extends across the picture and the mass of shadow is broken by the slender supports of the roofs, upon which the sun strikes, and an open doorway through which is the suggestion of a hot thoroughfare. The foreground is covered with loose stones and other débris, and above the tiled roof is a simple blue sky showing between the sunlit façades of lofty buildings.

*Stamp of sale at the lower right.*

*Height, 19 inches; width, 15½ inches.*

*From the sale of FORTUNY'S studio effects.*



No. 51

CESARE DETTI

ITALIAN

1848—

A WATER EXCURSION

Fan Design

ON a broad terrace near the gateway of a château is a party of ladies and gentlemen, some of whom have just arrived in a coach which is drawn by prancing horses. On the left is a stone stairway leading to the water's edge, where there are several pleasure boats ready to embark the crowd. On the left is an extensive view over a pleasant meadow through which a broad, placid stream flows.

*Signed at the lower left, C. DETTI.*

*Height, 14 inches; length, 27 inches.*

No. 52

PAUL JEAN CLAYS

BELGIAN

1819—1900

130

CALM NEAR ROTTERDAM

A GROUP of becalmed fishing vessels with bagging sails and drooping pennants forms the chief feature of the composition. Nearby is a rowboat filled with sailors, and on the left, in the middle distance, is a low point of land with various buildings and a number of craft moored to the shore.

*Signed at the lower right, P. J. CLAYS.*

*Height, 16½ inches; length, 24½ inches.*

*From the CLAYS Sale.*



No. 53

FRITZ THAULOW

NORWEGIAN

1847—

716

### THE BROOK

A BROAD, rippling stream runs down to the foreground from the middle distance, where it makes a bend and disappears behind a wooded point. Here a small village straggles up the hillside from the bank of the stream, and beyond it is a line of low, rounded summits forming the horizon against a sky covered with luminous vapor. Fruit trees in blossom enliven the landscape here and there.

*Signed at the lower right, FRITZ THAULOW.*

*Height, 19½ inches; length, 24 inches.*

No. 54

BERNARDUS JOHANNES BLOMMERS

DUTCH

1844—

120

INDUSTRY

A DUTCH vrouw is seated near a window in her cottage, busily engaged in sewing on a white garment, and, at the same time, rocking a cradle in which an infant is lying. Beyond the cradle a small child stands watching the baby, and through the window beyond the little group is seen a shepherd with a flock of sheep.

*Signed at the lower right, BLOMMERS.*

*Height, 15¾ inches; length, 19 inches.*



No. 54. *Industry.* By BERNARDUS JOHANNES BLOMMERS



No. 55

EUGÈNE LOUIS GABRIEL ISABEY

FRENCH

1804—1886

320

AFTER THE STORM

IN the foreground a rude bluff-bowed vessel is moored to a pier, and alongside is a boat with several men who are apparently taking the cargo from the vessel. She has evidently been through a severe storm, for her mast is broken off short, her sails are in disorder and she has lost her bowsprit. In the middle distance beyond the vessel are various sailing craft and a few houses. The sky is covered with jagged clouds suggesting the effect of a severe gale.

*Signed at the lower right, E. ISABEY.*

*Height, 15 inches; width, 11½ inches.*

No. 56

ÉMILE VAN MARCKE

FRENCH

1827—1891

270

LANDSCAPE AND CATTLE

HORSES and cattle are feeding in a level, grassy pasture which stretches across the foreground where small pools of water reflect the light from the sky, and bunches of reeds and coarse grass grow in the wet places. In the distance on the left a lofty hill rises against the sky, and, with an adjacent lower ridge, forms the horizon line. The sky is filled with drifting storm clouds.

*Signed at the lower left, EM. VAN MARCKE.*

*Height, 17½ inches; length, 29½ inches.*





No. 56. *Landscape and Cattle.* By ÉMILE VAN MARCKE



No. 57

ÉDOUARD FRÈRE

FRENCH

1819—1886

225

MOTHER AND CHILD

IN a simple cottage interior a mother is seated near the cradle of her child sewing on a child's garment. The light falls strongly upon the group from the upper left, throwing into luminous shadow the profile of the young mother, and accentuating the draperies and here and there the furniture. The background is a simple plastered wall with a bird cage, a salt box and bellows hanging against it. On the left is a closet door painted a dull green.

*Signed at the lower left, ED. FRÈRE, '58.*

*Height, 16 inches; width, 12½ inches.*

No. 58

LOUIS EUGÈNE BOUDIN

FRENCH

1824—1898

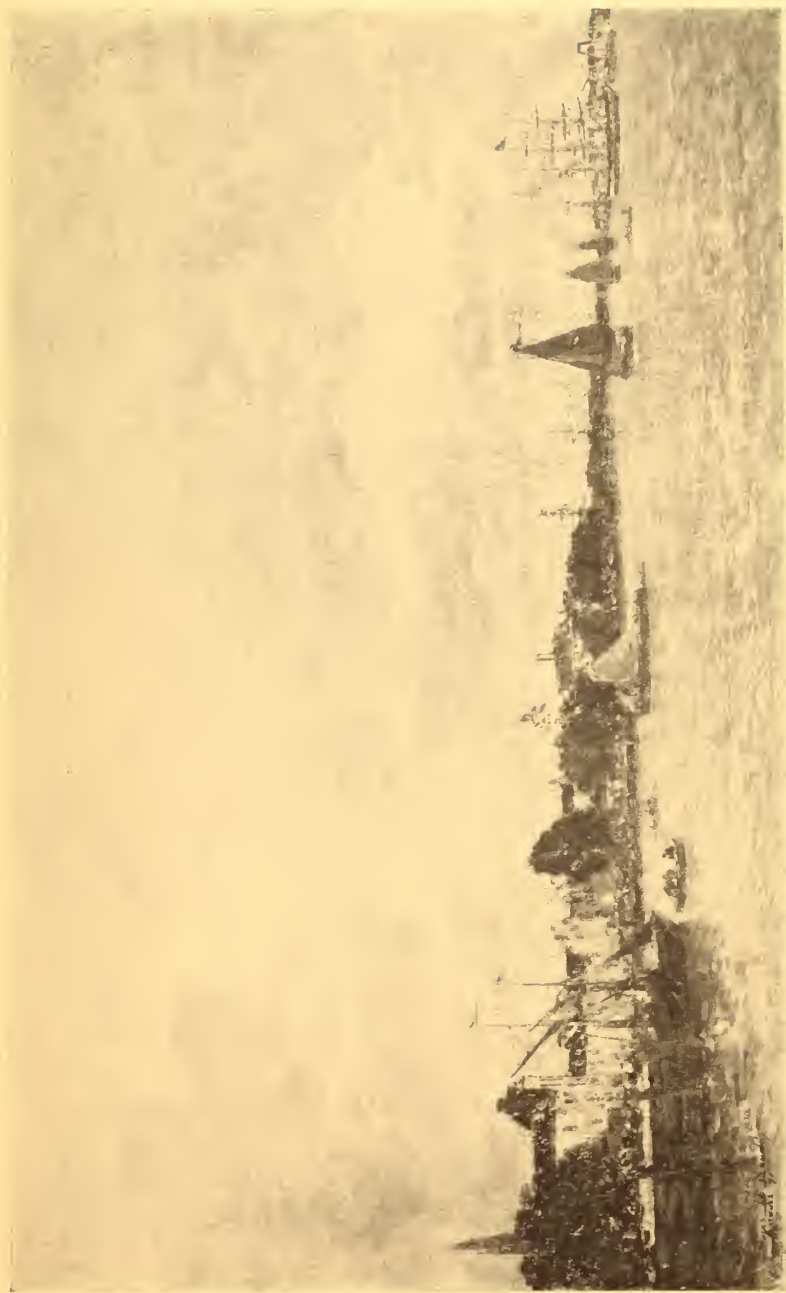
IN THE HARBOR

S 100

THIS is a view of the water front of the city of Antwerp before its recent improvement. From the foreground the broad river Scheldt, its surface broken by innumerable ripples, stretches away to the distance, where a low rank of trees forms the horizon. On the left is an irregular line of buildings broken by rounded masses of trees, and the river in front is busy with shipping of various sorts. The familiar spire of the great cathedral dominates the town and is a prominent object in the distance. The sky is nearly covered by rounded cloud forms.

*Signed at the lower left, E. BOUDIN, ANVERS, '71.*

*Height, 16 inches; length, 26 inches.*



No. 58. *In the Harbor.* By Louis Eugène Bourdin



No. 59

LUIGI LOIR

AUSTRIAN

Contemporary

275

PARIS STREET SCENE

THIS is a familiar scene in Paris, showing the tower of St. Jacques as the central object of the composition. The sidewalks are covered with people, and private carriages with smart drivers dash along the roadway. In the foreground is a French family, evidently on pleasure bent, the husband and wife arm in arm and each of them leading a child.

*Signed at the lower right, LOIR LUIGI.*

*Height, 12 $\frac{3}{4}$  inches; length, 16 inches.*

No. 60

PAUL JEAN CLAYS

BELGIAN

1819—1900

MARINE

A LARGE Dutch yawl is sailing before the wind along a broad, quiet river. The mast and sails are in strong contrast against a summer sky filled with luminous clouds. Right and left of the yawl, and farther away, are other vessels of similar rig, and in the left foreground is a rowboat with two figures.

*Signed at the lower right, VENSTE P. J. CLAYS.*

*Height, 13 inches; length, 19 inches.*

*From the sale of the studio effects of the ARTIST.*

No. 61

JOSÉ DOMINGO

SPANISH

1843—

1000

THE CABARET

STANDING astride a wooden bench, on which stands a delft wine jug, a cavalier in red doublet and breeches raises his right hand with a gesture of convivial welcome, while in his left he holds a tall glass half filled with white wine. The figure is partly relieved against a pier which supports a heavy wooden-timbered ceiling. On the left of the figure is a large wine-cask, and on the right a guitar player is seated near a window, while his companion holds the casement open to let in light and air.

*Signed at the lower right, DOMINGO, PARIS, 1881.*

*Height, 25 inches; width, 18 inches.*

No. 62

ANTONIO CASANOVA Y ESTORACH

SPANISH

320

THE MUSICIAN CARDINAL

A CARDINAL in red robes is seated in a gilded chair playing on a cello, attentively reading the score from an old music book which rests upon a gilded lectern nearby. The figure is seen down to the knees and is relieved against a mysterious gray background.

*Signed at the upper left, ANTONIO CASANOVA Y ESTORACH, PARIS, 1896.*

*Height, 10½ inches; length, 14 inches.*





No. 61. *The Cabaret.* By JOSÉ DOMINGO



No. 63

Mlle. ROSA BONHEUR

FRENCH

1822—1899

330

THE HORSE

THIS is a study of a dapple-gray horse, seen nearly in profile to the left. He stands in a straw-littered stable, and, lighted from the left, is in relief against a rough plastered wall.

*Signed at the upper right, ROSA BONHEUR.*

*Height, 12 inches; length, 15½ inches.*

*From the sale of the ARTIST'S effects.*

No. 64

ADOLF SCHREYER

GERMAN

1828—1899

725

THE DESERT

THREE Arabs with their horses have halted in the midst of an arid, broken plain. Two of them have dismounted, and the three are apparently discussing the direction they are to follow on their journey. Low, rugged elevations form the horizon under a deep-toned sky partly covered by cloud forms.

*Signed at the lower right, S*

*Height, 10½ inches; length, 14 inches.*

JEAN LÉON GÉRÔME

FRENCH

1824—1904

1077

THE SENTINEL AT THE SULTAN'S TOMB

A CURIOUSLY painted and gilded sarcophagus stands upon a carpeted floor in a mosquelike interior hung with multicolored flags. Richly embroidered and decorated banners on tall shafts surmounted by various gilded devices are ranged around the sarcophagus. In front of it two figures are prostrating themselves, touching their foreheads to the ground. On the right a half-naked pilgrim devoutly kisses the end of one of the banners, and on the left, in the foreground, a sheik, in rich salmon-colored burnous, stands in an attitude of devout attention.

PARIS, *September 7th*, 1895.  
*65 Boulevard de Clichy.*

DEAR SIR:

I have heard that you have bought my picture "Tidi-Abder-Rhamon's Tomb" and I beg to send you a few lines to explain the subject.

At the death of a holy musulman his fellows in religion build a little monument over the tomb, which is generally ornamented with flags and covered with draperies; these draperies are generally precious, often bearing inscriptions taken out of the Koran and written in the configues types.

The ornamentation of the monument is in carved and painted wood; on the top are little domes.

The musulman women (who they say have no soul) are not allowed to enter the Mosque but are authorized to visit the tombs of the saints, where you very often meet them, specially on certain days. From the decision of a Council at the majority of one, the Christian women are declared to have a soul and are given the right to enter Churches and Temples.

The subject of your picture is: A father with his two children has come to perform his devotion, on the right a Santon (that is, a religious lunatic) kisses a flag. Very often the believer after the prayer and before leaving the church kisses the holy cloth.

Please believe me, Dear Sir,

Truly yours,

*Signed: J. L. GÉRÔME.*

I forgot to tell that this tomb is situated very near the town of Algiers.

*Signed at the right, J. L. GÉRÔME.*

*Height, 26½ inches; width, 22 inches.*



No. 65. *The Sentinel at the Sultan's Tomb*  
By JEAN LÉON GÉROME





No. 66

JULES ADOLPHE BRETON

FRENCH

1827—

RETURNING HOME

775

THE motive for this picture was found in Northern France near the country home of the painter. It shows a fertile farming country with cornfields and shocks of grain and stacks of straw. Across a harvest field near the foreground a peasant man and woman are walking, the man carrying a scythe and the woman a heavy basket. In the distance farm buildings, clumps of trees and a church tower form the sky-line against a sunset in which the sun shows as a luminous red disk near the horizon.

*Signed at the lower left, JULES BRETON.*

*Height, 11½ inches; length, 17 inches.*

*From the ARTIST.*

No. 67

THÉODORE ROUSSEAU

FRENCH

1812—1867

SUNSET

275

STRETCHING across the foreground, which is in deep shadow, is a rough pasture with large trees growing here and there, the principal clump overhanging a small pool of water underneath a rounded hill. The trees on the right and the hill on the left form an irregular silhouette against a brilliant sunset sky.

*Signed at the lower left, TH. ROUSSEAU.*

*Height, 11½ inches; length, 18 inches.*

*From the AMERICAN ART ASSOCIATION'S Sale, 1895.*

No. 68

NARCISSE VIRGILE DIAZ DE LA PEÑA

FRENCH

1809—1876

FLOWERS

325

A LARGE bunch of richly colored flowers of various sorts almost fills the picture. They are in a strong light and in contrast against a background which suggests heavy foliage, with sky in the upper right of the composition.

*Signed at the lower right, N. DIAZ.*

*Height, 14 inches; width, 9½ inches.*



No. 69

MARTIN RICO

SPANISH

1850—

612

A BRIDGE AT VENICE

NEAR the foreground a slender bridge, with wrought-iron railing, crosses a narrow canal in which various Venetian boats are floating. On either side rise against the simple blue sky the façades of various houses with characteristic balconies and windows.

*Signed at the lower right, Rico.*

*Height, 14 inches; width, 9 inches.*

No. 70

ANTONIO CASANOVA Y ESTORACH

SPANISH

260

TESTING THE WINE

AN old monk, dressed in rough, white garments, is standing at the foot of a short flight of steps which lead into the wine cellar, and, raising a freshly opened bottle of some choice vintage, examines the color of the wine in the strong light. The figure is seen to just below the waist and the head is turned away from the spectator in *profil perdu*.

*Height, 12 $\frac{3}{4}$  inches; width, 7 $\frac{3}{4}$  inches.*

*From the sale of the ARTIST'S effects.*

No. 71

PAUL JEAN CLAYS

BELGIAN

1819—1900

A DUTCH FISHING BOAT

THIS is a study of a characteristic fishing boat common in the North Sea and in the waterways of Holland and Belgium. She is sailing directly across the river, or, rather, drifting, for the wind is very light and her colored sails hang in heavy folds. Beyond the boat is a suggestion of a low shore with various buildings and trees.

*Signed at the lower right, P. J. CLAYS.*

*Height, 11 inches; width, 8½ inches.*

*From the sale of the ARTIST'S studio effects.*

No. 72

JEAN JACQUES HENNER

FRENCH

1829—1905

HEAD

THIS is the head of a young girl seen in profile, strongly lighted from the upper left, the flesh in vivid relief against a mass of auburn hair which falls from her head on either side, and a piece of blue drapery which is thrown over her shoulders.

*Signed at the left, J. J. HENNER.*

*Height, 8½ inches; width, 6 inches.*

*From the ARTIST.*

560

No. 73

FRANZ VON DEFREGGER

GERMAN

1835—

290

HEAD

THIS is the head and shoulders of a robust German peasant girl. She wears a loose brown jacket with a falling lace collar, and on her head a narrow-brimmed felt hat ornamented with a bunch of wild flowers. The head, which is seen nearly in full face, and lighted from the upper left, is relieved against a smooth gray background.

*Signed at the lower left, DEFREGGER.*

*Height, 8½ inches; width, 6 inches.*

No. 74

GUSTAVE JEAN JACQUET

FRENCH

Contemporary

400

MEDITATION

THIS is the head and shoulders of a fair-haired maiden. She is seen nearly in full face, with the head slightly lowered and the eyes cast down. She wears a blue ribbon in her hair, a black one around her throat, and a pink silk mantle thrown over a blue bodice, trimmed with a pink ribbon.

*Signed at the lower left, G. JACQUET.*

*Height, 12½ inches; width, 9½ inches.*

*From the ARTIST.*

No. 75

FRANÇOIS FLAMENG

FRENCH

1859—

371 ✓

INFORMATION

A MOUNTED soldier of the time of Napoleon, who has penetrated far into the Alps, halts for a moment in a meadow where a peasant is engaged in watching his sheep. From him the soldier attempts to gain information as to the road or the enemy's movements, and the peasant emphasizes his language with a gesture of his right hand while he imperturbably smokes a long pipe. Beyond the group, across a small lake, is a view of arid foothills and serrated snow-peaks, and in the sky, glowing with late afternoon light, is the crescent of the new moon.

*Signed at the lower right, FRANÇOIS FLAMENG.*

*Height, 11 inches; width, 8 inches.*



No. 75. *Information.* By FRANCOIS FLAMENG





No. 76

JEAN BÉRAUD

FRENCH

1849—

521

### RUE DE LA PAIX

THIS is a study of the Rue de la Paix in Paris, near the Avenue de l'Opéra. On the left are well-known shop fronts, with a hurrying crowd of Parisians on the sidewalks. In the foreground is a private brougham with a dressmaker's boy and maid placing large pasteboard boxes in the carriage, while the fair purchaser waits near at hand.

*Signed at the lower right, JEAN BÉRAUD.*

*Height, 14 inches; length, 21 inches.*

*From the ARTIST.*

No. 77

EUGÈNE LOUIS GABRIEL ISABEY

FRENCH

1804—1886

MARINE

235

It is a breezy day in Holland and the bluff-bowed luggers are wallowing along in the rough waters of a broad canal. On the right is a green slope washed by the waves, where stands a windmill with spread sails, and beyond it a half-finished ship. The sky is covered with rolling luminous clouds, suggesting a gusty day.

*Signed at the lower left, E. I., '65.*

*Height, 8 inches; length, 12½ inches.*

No. 78

FÉLIX ZIEM

FRENCH

1821—

THE GRAND CANAL

325

THIS is a view at the entrance of the Grand Canal looking out toward the Church of the Salute, the dome of which rises high against a sunrise sky. The warm light from the sun sparkles on the water beyond the palaces on the left and glows on the façades along the canal on the right. A single gondola floats on the water in the foreground.

*Signed at the lower left, ZIEM.*

*Height, 10 inches; length, 13½ inches.*

*From the ARTIST.*



No. 79

JOHN M. SWAN, A.R.A.

ENGLISH  
Contemporary

260

### LIONESS AND FOXHOUND

A HUGE, tawny lioness and a young foxhound are lying close together on the floor of a cage. They are apparently play-mates, for there is a large ball lying near the paws of the lioness. The background is a gray wooden partition.

*Signed at the middle right, J. M. SWAN, 1882.*

*Height, 6½ inches; length, 11 inches.*

No. 80

LÉON AUGUSTIN LHERMITTE

FRENCH  
1863—

775

### THE POND

IN the foreground a laborer is fishing in a small pond. Toward the right the water is almost covered by reed and sedge. Beyond the pond, seen through a rank of trees in autumn foliage, is a pleasant landscape with country residences and, farther away, a high wooded hill.

*Signed at the lower left, LHERMITTE.*

*Height, 17½ inches; width, 13 inches.*

No. 81

JEAN CHARLES CAZIN

FRENCH

1840—1891

THE BROOK

A NARROW stream, flowing between low, grassy banks, leads from the right foreground diagonally to the left until it disappears under a rustic bridge. On the left is a deeply rutted road. Beyond the path which leads over the bridge, along which a single figure of a peasant woman is walking, is a grove of slender trees rising out of the picture. Between the trunks, and to the left, above a red-roofed cottage, is a sky covered with luminous clouds.

*Signed at the lower left, J. C. CAZIN.*

*Height, 16 inches; width, 12 inches.*

2250



No. 81. *The Brook.* By JEAN CHARLES CAZIN



No. 82

JOSEPH COOMANS

BELGIAN

1816—1891

## FISHING

A CLASSICAL maiden, draped in a tunic which has fallen off her left shoulder and is raised high upon her thighs, is perched upon a rock overhanging a swiftly flowing streamlet, holding in her extended hand a small bamboo fishing rod, allowing the float to drift down the stream. Near her stands a small girl holding in front of her a net already partly filled with fish. Behind the group and extending out of the picture is an enormous tree with gnarled and scarred trunk and shattered branches relieved against the green of a distant wood.

*Signed at the lower left, JOSEPH COOMANS, 1865.*

No. 83

ALBERTO PASINI

ITALIAN

1826—1899

2150

MARKET SCENE AT CONSTANTINOPLE

IN an open place in front of a large mosque in Stamboul is assembled a motley gathering of men and women in rich costumes, partly in the shadow of two large trees and partly in the brilliant sunshine which illuminates the scene. Various natives are vending fruit and other wares, and on the extreme right of the group is a curious old-fashioned coach with a single horse. The sky is covered with a delicate mist and various birds flutter above the trees and perch upon the mosque.

*Signed at the lower right, A. PASINI, 1869.*

*Height, 15 inches; length, 26 inches.*



A. PASINI 1859

No. 83. Market Scene at Constantinople. By ALBERTO PASINI





No. 84

EUGÈNE JETTEL

AUSTRIAN

1850—1901

3a

## RETURNING

Ox the right a farmer mounted on a white horse, and leading a brown one, is proceeding along a well-travelled road which leads out of the foreground, bordered on either side by cultivated fields. On the left is a small farmhouse with thatched sheds and hovels, and to the right of it is a larger establishment with a large thatched barn. In the foreground a few ducks waddle toward a small pool of water at the roadside.

*Signed at the lower left, EUGÈNE JETTEL, PARIS, '92.*

*Height, 17 inches; length, 24 inches.*

No. 85

MARTIN RICO

SPANISH

1850—

1472

RIO SANTA MARINA

THIS is a study of one of the famous canals in Venice. On the right the ornate façade of a palace rises in a row of buildings which extends in perspective to the distance, and the opposite buildings rise out of the picture on the left. In the middle distance the canal is crossed by a slender bridge over which foot passengers are hurrying. A number of gondolas and other boats, some with occupants and some without, float on the quiet surface of the water.

*Signed at the lower left, Rico.*

*Height, 28½ inches; width, 18 inches.*



No. 85. *Rio Santa Marina.* By MARTIN RICO



No. 86

HENRY MOSLER, A.N.A.

AMERICAN

1841—

## RETURNING HOME

THIS is a study of a peasant girl bearing on her shoulders a large brass milk can. She is walking across an orchard which is vividly illuminated by strong sunshine, striking upon the figure from the upper right and casting deep shadows upon the rich grass. In the right, beyond the figure, are the roofs and gables of a village, partly in light and partly in shadow.

*Signed at the lower right, HENRY MOSLER.*

*Height, 23½ inches; width, 17 inches.*

No. 87

FREDERICK W. KOST, A.N.A.

AMERICAN

1861—

## NIGHT

A SLUGGISH stream extends across the foreground and reflects the stems of tall trees, the forms of two men near a fire on the bank, and a long, low thatched building beyond. The feathery crests of the trees extend out of the picture at the top, and the sky suggests the approach of dawn.

*Signed at the lower left, FRED. W. KOST.*

*Height, 20 inches; length, 24 inches.*

*From the ARTIST.*

32

No. 88

MARIE DIETERLE

FRENCH  
Contemporary

3660

LANDSCAPE AND CATTLE

A HERD of spotted cattle is strolling about in a marshy pasture, some of them already in a shallow pool of water which partly covers the foreground. Beyond the cattle, on the right, is a broad expanse of meadow, dotted here and there with feeding animals, and on the left two clumps of trees rise against the sky, which is covered with light, drifting clouds.

*Signed at the lower left, MARIE DIETERLE.*

*Height, 24 inches; length, 29½ inches.*



No. 88. *Landscape and Cattle.* By MARIE DIETERLE







No. 89

JULES WORMS

FRENCH

1837—

1000

### THE SPANISH FORTUNE TELLER

IN the patio of a Spanish inn a merry company of young men and women are gathered after a convivial meal. A gypsy fortune teller, dressed in a figured costume, has approached the group and is telling the fortune of one of the maidens. On the left a small boy, dressed in toreador costume, is anxiously smoking a cigarette and watching a number of pigeons which are seeking their food on the ground nearby. A straggling fig tree grows in the courtyard and its broad leaves are contrasted with the sunlit building beyond, and a small patch of blue sky is seen in the upper right of the picture.

*Signed at the lower left, J. WORMS.*

*Height, 23 inches; length, 31 inches.*

*From the MARY JANE MORGAN Sale, 1886.*

No. 90

FREDERIK HENDRIK KAEMMERER

FRENCH

1839—1892

325

## FISHING

A YOUNG man and a young woman, seated on the edge of a grassy bank overhanging a broad river, are enjoying a day's fishing. He holds the pole while she, leaning on both arms, watches the sport attentively. In the foreground a pike and various other fish, together with the fish basket and bait box, are scattered on the grass. Beyond the figures, the drooping branches of a willow screen the larger part of the river from view. The figures are dressed in late eighteenth century costumes.

*Signed at the lower right, F. H. KAEMMERER.*

*Height, 21½ inches; length, 31½ inches.*



No. 91

910

LOUIS EUGÈNE BOUDIN

FRENCH

1824—1898

### ON THE SHORE

FROM the left foreground a shelving beach sweeps away in a double curve to the distance where a low headland extends into the sea. The waves toss and tumble upon the sand, and overhead a violent windstorm, bringing rain in heavy showers, sweeps across the sky. A few sailing craft struggle with the wind. In the distance on the right along the seashore are suggestions of a wooden wharf and various figures.

*Signed at the lower right, E. BOUDIN, '95. DEAUVILLE.*

*Height, 25½ inches; length, 36 inches.*

*From the sale of the ARTIST'S studio effects.*

No. 92

GUSTAVE COURBET

FRENCH

1819—1878

580

## THE SURF

A TUMBLING sea, breaking into many lines of wave crests, extends across the picture. The sea is apparently dashing upon a steep shore, for the masses of foam in the foreground suggest that the water meets with abrupt resistance. The sky is covered with a mass of drifting storm clouds against which the distant wave crests form the horizon line.

*Signed at the lower right, COURBET.*

*Height, 25½ inches; length, 32 inches.*



No. 92. *The Surf.* By GUSTAVE COURBET



No. 93

CARL WÜNNENBERG

GERMAN

1850—

THE PEACE OFFERING

A DARK-HAIRED maiden, dressed in a white tunic embroidered in gold, bears in either hand a flower-pot with an aster plant in full bloom. The figure is relieved against a gold background, bearing a geometric design, and behind the head is a gilded halo.

*Signed at the lower right, C. WÜNNENBERG.*

*Height, 35½ inches; width, 20½ inches.*

*From the ARTIST.*

No. 94

HENRI LEROLLE

FRENCH

Contemporary

5-21

A FRENCH VILLAGE

ON the left a row of stone cottages, covered with rough thatch and partly overgrown by creepers, extends away in perspective until it meets the edge of a wood. On the right side, in the foreground, stand two figures of peasant women gossiping, and on the right is the corner of a rough stone wall. The sunlight falls upon the scene from the upper right, casting luminous shadows on the walls of the cottages and across the dusty road.

*Signed at the lower right, H. LEROLLE.*

*Height, 25 inches; length, 31½ inches.*

No. 95

JULIEN DUPRÉ

FRENCH

1851—

1075

HARVEST

A NUMBER of peasants, chiefly women, are busily engaged in raking up the new-mown hay and loading it upon a large wagon. On the left a sturdy peasant woman raises a huge forkful, and on the right a companion is raking the hay into piles convenient for loading. The foreground is in shadow, and beyond is a strong passage of sunlight, across a meadow in which several haymakers are at work. A low ridge of wooded hills forms the horizon and the sky is filled with turbulent storm clouds.

*Signed at the lower left, JULIEN DUPRÉ.*

*Height, 26½ inches; length, 39½ inches.*

*From the ARTIST.*





No. 95. *Harvest.* By JULIEN DUPRÉ.



No. 96

OTTO DE THOREN

DUTCH

1828—1889

RETURNING FROM HARVEST

250

IN the foreground a Hungarian farm wagon, drawn by two horses and led by a peasant in characteristic costume, is proceeding along a rough pasture on the shore of a broad river. In the wagon, seated on the straw, are a mother and child, and a young man. The horses have difficulty in drawing the load and one of the peasants is tugging at the wheel. In the distance behind the wagon is a second one similarly laden, and on the left is seen the broad expanse of a quiet river, with a low line of hills beyond, and overhead a luminous sunset sky.

*Signed at the lower right, O. DE THOREN.*

*Height, 24 inches; length, 34 inches.*

No. 97

GEORGE INNESS, N.A.

AMERICAN

1825—1894

323

THE LAST OF THE MOHICANS

IN the foreground an enormous tree, with a scarred and gnarled trunk and straggling and twisted branches, grows on the edge of a small ravine through which a brook flows. Underneath the tree an Indian and a hunter, who have just slain a deer, sit upon the grass, intent upon watching some object in the distance. The foreground is in shadow and the middle distance beyond is strongly illuminated by the sunlight. Here and there through the dense foliage are glimpses of the blue sky beyond.

*Height, 25½ inches; length, 36 inches.*

No. 98

FERDINAND HEILBUTH

GERMAN

1826—1889

## SUMMER

IN the foreground three pleasure boats are moored to the grassy shore of a pleasant winding stream, and four young ladies in gay costumes are basking there in the sunlight. Beyond the group, and on the other side of the placid stream, is a large clump of trees, and farther away the river disappears in a mysterious distance, where a low line of hills forms the sky-line. The sunlight is modified by a thin stratum of mist, suggesting a scorching summer day.

*Signed at the lower right, H*HEILBUTH.

*Height, 22½ inches; length, 36 inches.*

No. 99

LÉON BAZILE PERRAULT

FRENCH  
Contemporary

1500

MATERNAL AFFECTION

A PEASANT mother, wearing a coarse, low-cut white chemise, a blue bodice and a dull mauve petticoat, is seated on a stone bench holding a small child on her knees, kissing his upturned face with maternal tenderness. The figures are of the size of life and relieved against a masonry background. On the right a grape vine grows against the wall, and the mother's knitting is lying on the stone seat beside her.

*Signed at the lower left, L. PERRAULT, 1894.*

*Height, 39 inches; width, 32 inches.*

*From the ARTIST.*



No. 99. *Maternal Affection.* By LÉON BAZILE PERRAULT





No. 100

LÉON BAZILE PERRAULT 5-30

FRENCH

Contemporary

### THE GRAPE GATHERER

A PEASANT maiden, dressed in coarse and patched garments, is standing near a wall against which grows a grape vine with clusters of ripe fruit. With both hands raised she cuts a bunch from the vine, at the same time turning her gaze upon the spectator. Beyond her on the left, seen partly between the branches of the vine, is a glimpse of a wooded park or garden, and on the right, near the feet of the maiden, stands a basket already well filled with bunches of grapes.

*Signed at the lower right, L. PERRAULT, 1893.*

*Height, 39½ inches; width, 25½ inches.*

No. 101

AUGUSTE HAGBORG

GERMAN  
Contemporary

475

HOME FROM HARVEST

A YOUNG peasant, in the coarse garments of his class, carrying over his shoulder a rude cradle for harvesting grain, is trudging along a sandy country road, accompanied by a maiden who bears over her shoulder a shock of wheat gleanings. Beyond the group is a simple landscape, showing on the left a gentle sloping pasture and on the right a tiny village. The ruddy sun is just setting in the distance and the sky is covered by small cloud forms.

*Signed at the lower right, HAGBORG.*

*Height, 39¼ inches; width, 31½ inches.*

*From the ARTIST.*



No. 101. *Home from Harvest.* By AUGUSTE HAGBORG



No. 102

JULES JOSEPH LEFEBVRE

FRENCH

1834—

THE FRUIT SELLER

425

A BARE-FOOTED Italian maiden, in characteristic dress, consisting of a white chemise with red half sleeves and bodice, a yellow petticoat, blue apron and headdress of white stuff, stands against a rough wall, her head upraised, engaged in knitting a striped red stocking. On the right is the opening of a fruit shop where fruit and vegetables are exposed for sale.

*Signed at the lower left, JULES LEFEBVRE.*

*Height, 41 inches; width, 24 inches.*

No. 103

P. MARCIUS SIMONS

FRENCH

Contemporary

122)

THE CITY OF OPHIR

IN the distance, the golden city, with a multitude of domes, turrets and towers, shimmers in the strong sunlight against a sky partly covered by rapidly drifting kaleidoscopic-colored clouds. From the city gates a multitude of inhabitants pours down to the shores of a broad canal which flows from the right distance out of the picture. In the left of the foreground is a broad quay with a large crowd of people, and floating on the canal nearby are various craft with brilliant-colored sails, all filled with passengers.

*Signed at the lower right, P. MARCIUS SIMONS.*

*Height, 34½ inches; length, 43½ inches.*

*From the ARTIST.*



No. 103. *The City of Ophir.* By P. MARCIUS SIMONS





No. 104

WILLIAM M. CHASE, N.A.

AMERICAN

1849—

220

CARMENCITA

THE full-length figure, about two-thirds life-size, of the famous Spanish dancer. Resting her weight on her left foot, and touching the floor with the toe of her right, she swings her body in profile, and, throwing back her head, raises both her arms, at the same time clicking the castanets. She is dressed in a sleeveless bodice and short, full petticoat, elaborately embroidered and trimmed with gold, and from her waist flutters a scarf of gold tissue. At her feet her admirers have thrown bunches of roses and a gold bracelet.

*Signed at the lower right, Wm. M. Chase.*

*Height, 70 inches; width, 40 inches.*

No. 105

PROFESSOR WILHELM KRAÿ

GERMAN

Contemporary

410

PSYCHE

THE full-length figure of the classical maiden, partly draped in a diaphanous mantle, sits half-crouching on the rocks at the seashore, resting her upraised head on her left hand. On her shoulders are butterfly wings with iridescent colors. The upper part of the figure is relieved against a warm-toned sky, and near the feet, which rest on jagged rocks, the sea breaks in masses of foam.

*Signed at the lower left, W. KRAÿ.*

*Height, 44½ inches; width, 29½ inches.*



No. 105. *Psyche*. By PROFESSOR WILHELM KRAY



No. 106

MAURICE LELOIR

FRENCH

1853—

460

THE HARVEST FESTIVAL

IN the foreground, floating on a placid stream, is a rowboat gayly decorated for the harvest festival. As a figurehead in the bow is a shock of wheat, with various farming implements, and bearing a stuffed cockerel perched between the tines of a wooden pitchfork. Along the gunwales are fastened garlands of flowers and leaves, and in the stern, under an embroidered canopy, with bunches of flowers on either side, the master, his wife and small child are seated on a couch covered with ripened wheat. Two rowers tug at the oars and four musicians are busily playing. Beyond the boat is a steep, grassy bank, with a large clump of pollard willows, and on the crest of the bank, against the sky, is seen a procession of laborers on their way to the festival. The costumes are all of the late eighteenth century.

*Signed at the lower right, MAURICE LELOIR, 1882.*

*Height, 71 inches; length, 110 inches.*

No. 107

JULES JOSEPH LEFEBVRE

FRENCH

1834—

1100

PANDORA

THE slender, youthful figure of Pandora stands facing the spectator, holding with both her hands a small ivory box. From her right arm fluttering drapery sweeps over her shoulder and behind her head, above which is a six-pointed star sparkling in the murky atmosphere. A chaplet of gold laurel leaves surrounds the head. The maiden is walking on a rocky plain, suggesting a thin crust over underground fires, for steam mounts from various crevices, and a volcanic light accentuates the rocks and glows in the horizon.

*Signed at the lower right, JULES LEFEBVRE.*

*Height, 52 inches; width, 25 inches.*



No. 107. *Pandora.* By JULES LEFEBVRE





# SECOND EVENING'S SALE

FRIDAY, FEBRUARY 16, 1906

AT MENDELSSOHN HALL

BEGINNING PROMPTLY AT 8.15 O'CLOCK

## DRAWINGS

No. 108

JEAN FRANÇOIS MILLET

FRENCH

1814—1875

### WRESTLERS

A PEN and ink sketch of two nude figures wrestling.

*Signed at the lower right, J. F. M.*

*Height, 6 inches; width, 4¾ inches.*

Handwritten signature and initials in the lower right corner of the page, consisting of a stylized signature above the initials 'JF'.

No. 109

JEAN FRANCOIS MILLET

FRENCH

1814—1875

A FRENCH VILLA

An outline in pencil of a small hamlet in a narrow valley. 7

*Signed at the lower right, J. F. M.*

*Height, 3 inches; length, 4¾ inches.* 50

LA MANCHE

A PENCIL sketch of two Channel vessels, with bellying sails, wallowing through a heavy sea.

*Signed at the lower right, J. F. M.*

*Height, 2½ inches; length, 4 inches.*

No. 110

Mlle. ROSA BONHEUR

FRENCH

1822—1899

THE HORSE FAIR

Two pencil sketches, probably early suggestions of the composition of the artist's famous picture, "The Horse Fair." In the upper sketch the composition is quite fully developed.

*Signed at the lower right, ROSA B.*

*Height, 7 inches; length, 11 inches.*

*From the sale of the ARTIST'S studio effects.*

No. 111

JOSEF ISRAELS

DUTCH

1824—

PENCIL DRAWING

A FULL-LENGTH figure of a Dutch peasant seated on a wooden bench with both hands resting on his knees, his head slightly inclined upon his chest and his eyes raised. He is in his shirt sleeves and wears a woollen cap with a broad visor.

*Signed at the lower right, JOSEF ISRAELS.*

*Height, 11¼ inches; width, 6½ inches.*

No. 112

WILLIAM ADOLPHE BOUGUEREAU

FRENCH

1825—1905

FEMALE FIGURE

A STUDY in pencil and white chalk of a nude female figure, seated facing the spectator, with her left leg across her right and her right arm extended at full length across the left thigh. Her left arm is raised and her head is turned toward the right shoulder.

*Signed at the lower right, W.M. BOUGUEREAU.*

*Height, 11½ inches; width, 6¾ inches.*

No. 113

M<sup>L</sup>L<sup>E</sup>. ROSA BONHEUR

FRENCH

1822—1899

## DRAWING

AN outline drawing of a rearing horse, with a rider, done in black crayon on charcoal paper. The animal and rider are seen in profile.

*Signed at the lower right, ROSA B.*

*Height, 9½ inches; length, 12½ inches.*

*From the sale of the ARTIST'S studio effects.*

No. 114

LOUIS EUGÈNE BOUDIN

FRENCH

1824—1898

## SKETCHES

THESE two sketches, in one frame, are from motives found on the seashore. The upper one shows a rowboat full of passengers about to leave on a water excursion. The lower sketch shows two fishing boats, moored to a broad stone quay on which several figures are standing.

*Inscribed on the back: "Ces deux aquarelles sont du peinteur, E. BOUDIN.  
J. ALLARD."*

*Height, 15 inches; width, 8 inches.*

No. 115

LOUIS EUGÈNE BOUDIN

FRENCH

1824—1898

DORDRECHT

THIS is a sketch, partly in water color and partly in pencil, of the interesting old Dutch town seen from the river bank at Pappendrecht, opposite.

*Signed at the lower right, E. BOUDIN, and inscribed at the lower left, DORDRECHT, '75.*

*Height, 8½ inches; length, 13 inches.*

No. 116

JOHN BARTHOLD JONGKIND

DUTCH

1822—1891

A DUTCH CANAL

Black and White

THIS is a sketch of a broad canal near the town of Dordrecht in Holland. From the foreground, on the right, a broad foot-path sweeps to the right and then makes a turn to the left, following the bank of the canal, on which a large barge is floating. In the distance is visible the lofty spire of a church rising high above the surrounding trees.

*Signed at the lower left, JONGKIND, DORDRECHT.*

*Height, 10 inches; length, 15 inches.*

No. 117

CHARLES ÉMILE JACQUE

FRENCH

1813—1894

370

IDYL

Black and White

IN the foreground a sturdy shepherd marches along at the head of his flock of sheep, which are feeding over a pasture, clasping around the shoulders a young girl, who leans confidently against his chest. On the right of the group a black shepherd dog guards the flock, and, in the middle distance, a great clump of trees rises against the sky, while on the right there is a wide view over cultivated fields and meadows.

*Signed at the lower left, CH. JACQUE.*

*Height, 15 inches; length, 20½ inches.*

## PASTELS AND WATER COLORS

No. 118

LOUIS EUGÈNE BOUDIN

FRENCH

1824—1898

### SUNSET

THE sun is nearing the horizon, where a narrow band of clouds stretches across from right to left, and partly conceals the luminous disk. The glowing light, which touches a mass of cumuli higher in the sky, is reflected in the foreground on the tossing waves of the sea.

*Signed at the lower right, E. B.*

*Height, 7½ inches; length, 10½ inches.*

No. 119

LOUIS EUGÈNE BOUDIN

1824—1898

FRENCH

AFTER THE STORM

Pastel

THIS is a sketch of a turbulent sky suggesting the aftermath of a storm. The torn and jagged clouds are strongly lighted by the glow of early sunset. In the foreground is a suggestion of an open sea.

*Signed at the lower right, E. B.*

*Height, 7 inches; length, 10½ inches.*

No. 120

NARCISSE VIRGILE DIAZ DE LA PEÑA

FRENCH

1807—1876

25

LANDSCAPE

Water Color

AN open glade in the forest with gnarled trees on either side framing a sunlit vista beyond. The foreground is in shadow and is broken by a tiny stream which flows between low, grassy banks.

*Signed at the lower right, N. D.*

*Height, 5½ inches; length, 8 inches.*



No. 121

LOUIS ALEXANDRE LELOIR

FRENCH

1843—1884

THE GUITAR PLAYER

Water Color

A YOUNG lady, dressed in ample Chinese robes, which are richly embroidered and trimmed, is seated on a Turkish rug holding with both hands a curious mandolin or guitar, with a long neck, on which she is playing with an ivory plectrum. Behind the figure is a Chinese screen ornamented by conventionalized forms of animals and marine monsters.

*Signed at the lower right, LOUIS LELOIR, '72.*

*Height, 9½ inches; length, 13½ inches.*

No. 122

LUDWIG PASSINI

FRENCH

1832—1903

HEAD

Water Color

THIS is a study of the head and shoulders of a Venetian girl. The head is seen in three-quarters view to the left, the eyes slightly turned away from the spectator, and her brown hair is somewhat dishevelled. Around her neck she wears a red, black and white striped and plaid kerchief, knotted over a striped mauve bodice.

*Signed at the upper left, LUDWIG PASSINI, VENEZIA.*

*Height, 10½ inches; width, 7 inches.*

No. 123

CHARLES OLIVIER DE PENNE

FRENCH

1831—1897

THE MEET

Water Color. Fan design

A LARGE party of ladies and gentlemen have assembled for a day's hunting in a large park or forest in France. On either side in the foreground are foxhounds, some of them in leash, some of them resting in the care of keepers, and in the middle distance are groups of ladies and gentlemen, all in hunting costume, with carriages containing visitors. Beyond this group is a broad *allée* stretching away to the distance between thick woods on either side.

*Signed at the lower right, O. DE PENNE.*

*Height, 11 inches; length, 22 inches.*

## OIL PAINTINGS

No. 124

ANTONIO CASANOVA Y ESTORACH

SPANISH


### TESTING THE WINE

Two jovial, old Franciscan monks are apparently engaged in drinking a companion's health, for one of them holds in his raised right hand a tumbler half full of wine, and seems to be uttering some friendly sentiment. The heads are in relief against a modified blue background.

*Height, 4 inches; length, 4¼ inches.*

*From the CASANOVA Sale.*

No. 125

CHARLES ÉMILE JACQUE 

FRENCH

1813—1894

### HENS

A BLACK hen seeks for food in the straw upon which a white companion sits, apparently covering a setting of eggs.

*Signed at the lower left, CH. JACQUE.*

*Height, 4¾ inches; width, 6 inches.*

No. 126

GUSTAVE JEAN JACQUET

FRENCH

1846—

HEAD

THIS is a study of a young girl of ten summers or so, the head seen nearly in profile to the left and the eyes turned in the same direction. Her flowing brown hair is bound to the head by a slender ribbon, and a loose white drapery falls over both shoulders.

*Signed at the lower right, G. JACQUET.*

*Height, 8½ inches; width, 6 inches.*

225

No. 127

ANTONIO CASANOVA Y ESTORACH

SPANISH

TWO MONKS AND A CARDINAL

THREE studies of ecclesiastical type framed together.

The left represents a monk, with a smile of pleasant anticipation on his face, filling a wine glass from a bottle.

The middle figure shows a discontented old Capuchin monk looking over his spectacles.

The figure on the right shows a jolly old cardinal reading an amusing book.

*Signed on the backs, A. CASANOVA Y ESTORACH, 1897.*

*Height, 3½ inches; width, 2½ inches each.*

240

No. 128

M<sup>L</sup>LE. ROSA BONHEUR

FRENCH

1822—1899

THE QUARRY

410

A LIVER and white setter dog has found a rabbit hiding under some low bushes, and rigidly crouches, pointing at the same time with his sensitive nose. Beyond the dog is a vista along the edge of a large forest to a mysterious distance.

*Signed at the lower right, R. BONHEUR, 1859.*

*Height, 8½ inches; length, 10½ inches.*

No. 129

FÉLIX ZIEM

FRENCH

1821—

VENICE

27)

THIS is a study of early morning effect along the Canal San Marco. The left foreground is a flat, level beach partly exposed by the receding tide, and fishermen are busy there with their nets. In the middle distance, on the right, are seen the façades of the Riva, and on the left a fishing vessel with colored sails is lazily floating on the placid canal. The sky is covered with a luminous mist, the light being concentrated near the middle of the picture.

*Signed at the lower right, ZIEM.*

*Height, 8½ inches; length, 11 inches.*

No. 130

JEAN JACQUES HENNER

FRENCH

1829—1904

7W

A HEAD

THIS is a study, in profile, of a maiden of classical type, with a wealth of brilliant auburn hair unbound and flowing in loose masses over either shoulder. The light falls from the upper left, accentuating the mass of hair, the face and the bust, and bringing them into strong contrast with the deep tones surrounding them.

*Signed at the lower left, J. J. HENNER.*

*Height, 10 inches; width, 7 inches.*

*From the ARTIST.*

No. 131

FÉLIX ZIEM

FRENCH

1821—

NIGHT ON THE LAGOON

3W

IN the foreground a gondola with a single oarsman is rapidly approaching the broad band of light where the full moon, breaking through the clouds, is reflected on the twinkling surface of the broad lagoon. A brilliant red light on the gunwale of the gondola comes out vividly against the dark mass. On the left, in the distance, is the Campanile and the mysterious forms of the adjacent buildings.

*Signed at the lower left, ZIEM.*

*Height, 7 inches; length, 11 inches.*

No. 132

ANTONIO CASANOVA Y ESTORACH

SPANISH

THE CARDINAL AND THE MONK

340

A CARDINAL and a monk are seated opposite one another with a tea table between them, the former leaning back in an easy chair pouring liquor into a teacup, and the monk, watching the operation through his spectacles, pauses for a moment in the reading of his breviary. The figures are in relief against a grayish brown background.

*Height, 8½ inches; length, 10½ inches.*

*From the CASANOVA Sale.*

No. 133

I. H. J. T. FANTIN-LATOUR

600

FRENCH

1836—1905

FIGURE

A FULL-LENGTH female figure is seated on a rock apparently near a pool of water in which she is about to bathe. Surprised by the approach of someone, she turns her head away and hastily throws about her a piece of loosely flowing drapery.

*Signed at the lower left, FANTIN.*

*Height, 9½ inches; width, 8 inches.*

No. 134

CHARLES ÉMILE JACQUE

FRENCH

1813—1894

620

POULTRY

A GAMECOCK and several hens of different breeds are busy searching for food in the straw at the foot of a plastered wall. The sunlight strikes strongly upon the cock and a white hen in the foreground, casting luminous shadows on the yellow straw.

*Signed at the lower right, CH. JACQUE.*

*Height, 5 inches; length, 8½ inches.*

No. 135

JEAN CHARLES CAZIN

FRENCH

1840—1900

180

BRITTANY LANDSCAPE

A RED-TILED, roughly plastered cottage, with a few small out-buildings and a neighboring straw stack, form a prominent group in the broad expanse of a farming country where no other habitation is visible. From the left foreground a sandy path winds away to the right. The sun, which is nearing the horizon, shines through a soft mist which covers the sky.

*Signed at the lower right, J. C. CAZIN.*

*Height, 5 inches; length, 8½ inches.*

*From the ARTIST.*





No. 136

JACOB MARIS

40

DUTCH

1838—1899

### ON THE ZUYDER ZEE

AN old walled town with turreted gates stands near the shores of a wide bay or inlet, and near the water gate, which is the principal object in the composition, two fishing boats are moored. The moon is near the zenith and is reflected in a broad band of light on the rippling water. In the foreground two figures are walking along the beach toward the town.

*Signed at the lower left, J. H. MARIS.*

*Height, 5 inches; length, 8 inches.*

No. 137

JEAN CHARLES CAZIN

FRENCH

1840—1900

LANDSCAPE

A GRASS-COVERED meadow extends across the foreground, and in the middle distance are several haystacks and a large, rounded tree standing on the crest of a slope, which apparently descends to the edge of the forest beyond. The light in the sky is concentrated on a large cloud form in the upper right of the picture.

*Signed at the lower left, J. C. CAZIN.*

*Height, 5 inches; length, 8½ inches.*

*From the ARTIST.*

No. 138

JEAN JACQUES HENNER

FRENCH

1829—1905

MIDSUMMER

A SEMICIRCULAR ivory panel, on which the artist has painted the full-length reclining figure of a nude female in full sunlight. She lies upon her right side, her head resting on her hands against a low bank, and her left leg, extended at full length, crossing the right one. Above her, and a little to the right, a simple blue sky shows between clumps of trees.

This little composition was painted for the middle panel in a displayed painted fan.

*Signed at the lower left, J. J. HENNER.*

*Height, 4 inches; length, 8 inches.*

No. 139

JEHAN GEORGES VIBERT

FRENCH

1840—1902

40

THE ARTIST CARDINAL

AN old cardinal in full robes, wearing a red velvet hat, *à la Rembrandt*, is painting on a large canvas which stands on an easel in the left of the picture. He holds his palette, brushes and maul-stick in quite a professional manner, and is apparently not altogether an amateur.

*Signed at the lower right, J. G. VIBERT.*

*Height, 10 inches; width, 7½ inches.*

*From the ARTIST.*

No. 140

LOUIS EUGÈNE BOUDIN

FRENCH

1824—1898

BRITTANY INTERIOR

IN a cottage interior are two peasant women in characteristic costumes, one of them seated at a curious spinning wheel, the other holding in her lap a young child. In the background are suggestions of heavy pieces of furniture, and in the foreground two hens are seeking food on the floor.

*Signed at the lower right, E. B.*

*Height, 8¼ inches; length, 10¼ inches.*

No. 141

HENRY MOSLER, A.N.A.

AMERICAN

1841—

### THE FAGGOT GATHERER

IN the foreground, toiling down a steep hillside, is a peasant woman bearing on her back a heavy burden of large faggots. The figure is in shadow against a background of trees and underbrush strongly illuminated by sunshine.

*Signed at the lower left, HENRY MOSLER, '99.*

*Height, 12 inches; width, 9 inches.*

No. 142

JULES WORMS

FRENCH

1832—

425

### Á DIOS

A SPANISH guitarist, in fancy dress, stands beneath the barred window of his lady love, with whom he is earnestly conversing. Beyond the musician is a narrow passage-way or alley bridged over by a room.

*Inscribed at the lower left: A MON AMI SCHENCK. J. WORMS.*

*Height, 16 inches; width, 6½ inches.*

No. 143

THEOPHIL H. DE BOCK

DUTCH

1850—1904

LANDSCAPE

BEYOND a grassy meadow in the foreground rises a great ledge of rocks, at the foot of which several figures are assembled. On the right of the rock is a dense forest, and slender trees straggle up the slope to the summit of the elevation. Large cumulus clouds float across the sky.

*Signed at the lower right, BOCK.*

*Height, 10½ inches; length, 17 inches.*

No. 144

PAUL JEAN CLAYS

BELGIAN

1819—1900

BOATS LEAVING OSTEND

THIS is a study of the shallow North Sea near the Belgian coast while it is lashed by a heavy storm from the southwest. In the left foreground two vessels are struggling with the waves, and on the right two fishing boats are tossing in the rollers. In the horizon, where the storm clouds cast an immense shadow on the water, are various fishing craft and a single steamer.

*Inscribed at the lower left, VENTE P. J. CLAYS.*

*Height, 10¼ inches; length, 19½ inches.*

375

No. 145

FREDERIK HENDRIK KAEMMERER

FRENCH

1839—1892

AFTER THE BALL

A young lady, evidently exhausted after her appearance at a fancy-dress ball, has thrown herself carelessly upon the cushions of a divan behind a table on which is a large jardinière filled with roses. Her head is thrown back and her dishevelled hair is spread out upon the cushions on either side. She is dressed in blue satin, and in the right foreground a mask of the same color is thrown on the floor.

*Signed at the lower left, F. H. KAEMMERER.*

*Height, 16 inches; width, 10½ inches.*

No. 146

PAUL LOUIS GROLLERON

FRENCH

1848—1901

THE SKIRMISH

A FEW French infantrymen, accompanied by a bugler and commanded by an officer, are skirmishing along under a high wall. Those on the left have found the enemy and are actively firing. One soldier lies dead, another has received a staggering wound, and the officer, perched on a ladder, is looking over the wall.

*Signed at the lower left, P. GROLLERON.*

*Height, 13 inches; length, 16 inches.*

No. 147

JOSEPH MORTIMER LICHTENAUER

AMERICAN

1876—

HEAD

A LIFE-SIZE study of the head and shoulders of a fair-haired young girl, seen in profile to the right. Around her shoulders is a green mantle knotted in front. The background is a simple tone of light gray.

*Signed at the upper right, LICHTENAUER.*

*Height, 17½ inches; width, 14 inches.*

No. 148

AUGUSTE TOULMOUCHE

FRENCH

1829—1890

220

LOVE'S TOKEN

A SMALL decorated vase, filled with white lilacs, stands on a table in the foreground, and over it bends a dark-haired young maiden dressed in a robe of red velvet trimmed with gray fur. The background is a panelled room with gilt decoration, and behind the figure is a bronze bust on a square pedestal.

*Signed at the lower right, A. TOULMOUCHE, '67.*

*Height, 19 inches; width, 15 inches.*

No. 149

ANTOINE VOLLON

FRENCH

1833—1900

STO

STILL LIFE

A GOLDEN salver filled with apricots, a porcelain bowl ornamented with green, a mandolin, a gold ewer and drinking cup, with a few roses and other objects, are assembled on a green-fringed cloth spread upon a buhl table. In the background is the suggestion of a panelled room and a rich, heavy red curtain.

*Signed at the lower left, A. VOLLON.*

*Height, 12½ inches; length, 16 inches.*

No. 150

ANTONIO CASANOVA Y ESTORACH

SPANISH

222

THE GOURMAND

A ROTUND and jovial Franciscan monk is enjoying hugely a plate of field strawberries, and, about to raise a spoonful to his lips, is smiling in anticipation of the feast. The head is nearly life-size and is in strong light from the upper left.

*Signed at the upper left, ANTONIO CASANOVA Y ESTORACH, PARIS, 1888.*

*Height, 16½ inches; width, 12½ inches.*



No. 151

JEAN LÉON GÉRÔME

FRENCH

1824—1904

THE CARAVAN

925

IN the foreground is an Arab, in a white burnous, mounted on a donkey accompanied by a foal. He is proceeding briskly along the sandy shore of a bay which extends partly across the picture from the right to the left. Following the Arab, at some distance away, is a large herd of goats under the care of a goatherd, and still farther behind a long caravan of many camels, some with riders and some without. In the distance a range of rocky summits, with arid foothills, rises against the simple blue sky.

*Signed at the lower left, J. L. GÉRÔME.*

*Height, 10¼ inches; length, 14 inches.*

No. 152

PAUL JEAN CLAYS

BELGIAN

1819—1900

410

ALONG THE QUAY

Two large Dutch yawls, with colored sails, are drifting in a light wind along near a populous quay of a large town, and form the chief figure of the composition. In the foreground on the left of the vessels is a rowboat, with two figures, and beyond, seen down the broad river or inlet, is a mass of shipping extending to the distant horizon.

*Inscribed at the lower left, VENTE P. J. CLAYS.*

*Height, 13 inches; length, 14½ inches.*

No. 153

ALPHONSE MARIE DE NEUVILLE

FRENCH

1836—1885

750

THE SENTINEL

A HUSSAR, in silver trimmed képi and jacket, full red trousers with leather extensions, is standing in profile, his left hand on his hip above his sword guard, and his right hand by his side holding a cigarette. The head is in three-quarters view, the eyes turned toward the spectator, and the figure is in relief against a rough-plastered wall, suggesting the façade of a building.

*Signed at the lower right, A. DE NEUVILLE, 1878.*

*Height, 12 inches; width, 8 inches.*



No. 153. *The Sentinel.* By ALPHONSE MARIE DE NEUVILLE



No. 154

JEAN JACQUES HENNER

FRENCH

1829—1905

72

HEAD

THE head of a young girl, about half life-size, with a mass of loosely flowing auburn hair. The face is seen in profile to the left, the head slightly lowered and the eyes raised. A fold of red drapery crosses the left shoulder.

*Signed at the lower left, J. J. HENNER.*

*Height, 10½ inches; width, 8½ inches.*

No. 155

ANTONIO CASANOVA Y ESTORACH

SPANISH

460

A GOOD STORY

A MONK, who has been taking tea with a cardinal, is amusing his host with a good story, which he whispers in his ear, concealing behind him at the moment his breviary, which he holds in his left hand. The two heads are close together over a mahogany table, with ormolu mounts, on which is spread a rich and delicate tea service.

*Signed at the upper right, ANTONIO CASANOVA Y ESTORACH, PARIS, 1895.*

*Height, 13 inches; length, 16 inches.*

No. 156

JEHAN GEORGES VIBERT

FRENCH

1840—1902

5-20

THE CARDINAL

THIS is a study of an old cardinal in red robes and biretta. His shoulders are in profile and his head in three-quarters view to the left, his eyes turned toward the spectator. The expression on his face denotes that he is listening to an agreeable story.

*Signed at the lower left, J. G. VIBERT.*

*Height, 10½ inches; width, 8½ inches.*

No. 157

I. H. J. T. FANTIN-LATOURE

FRENCH

1836—1905

87

CARNATIONS

A BUNCH of carnations of a variety of colors stands in an ordinary glass tumbler full of water. The flowers are in a strong but diffused light and are relieved against a mysterious gray background.

*Signed at the lower left, FANTIN.*

*Height, 11½ inches; width, 10½ inches.*

No. 158

JEAN JACQUES HENNER

FRENCH

1829—1905

5-21

ASLEEP

A NUDE female figure is reclining in the foreground near a small oval-shaped pool. She lies on her left side and her back is turned toward the spectator. The flesh is in a strong effect of light and shade and the head and upper part of the body are relieved against the dark mass of a clump of trees beyond. In the upper right of the picture is an area of simple blue sky which is reflected in the pool below.

*Signed at the lower left, J. J. HENNER.*

*Height, 8½ inches; length, 10½ inches.*

No. 159

JEAN JACQUES HENNER

FRENCH

1829—1905

1472

ANDRÓMEDA

THE nude figure of the unfortunate maiden is seen full length and in profile, her arms upraised, her head thrown back and her auburn hair floating in the breeze. Her right leg is bent and she rests her weight on the left. The figure is in relief against the sombre mass of a lofty cliff, beyond which, on the right, is a suggestion of the sea.

*Signed at the lower right, J. J. HENNER.*

*Height, 13½ inches; width, 8 inches.*





No. 159. *Andromeda.* By JEAN JACQUES HENNER



No. 160

CHARLES FRANÇOIS DAUBIGNY

FRENCH

1817—1878

370

A COUNTRY ROAD

A BROAD, well-travelled road leads from the foreground to the middle distance around and beneath a large clump of lofty trees in full summer foliage. On the left is a suggestion of a grassy bank with a fence surrounding a park or a garden.

*Signed at the lower right, DAUBIGNY.*

*Height, 10½ inches; width, 8 inches.*

No. 161

ANTOINE VOLLON

FRENCH

1833—1900

425

STILL LIFE

A COPPER jug and a brass kettle are placed on an upturned tub. Nearby stands a green glazed jar, and in front of it is a plate with a long-handled ladle and four eggs. On the floor opposite the plate are onions and mussels scattered about.

*Signed at the lower right, A. VOLLON.*

*Height, 10 inches; length, 13½ inches.*

No. 162

ADOLF SCHREYER

GERMAN

1828—1899

7  
971

A MOORISH HORSEMAN

A Moor, mounted on a brown pony, his gun slung across his back, is fording a rocky stream, and driving, at the same time with him, a white pack horse which is straggling along under a load. Across the stream is a bluff partly overgrown with bushes, and to the left a gently sloping tract of land leading off to the extreme distance. The sky is covered with gray clouds and the landscape is in full sunlight effect.

*Signed at the lower right, S*

*Height, 10½ inches; length, 13½ inches.*



No. 162. *A Moorish Horseman.* By ADOLF SCHREYER





No. 163

ADOLF SCHREYER

GERMAN

1828—1899

S-170

### ARABIAN HORSEMAN

In the foreground is a rough pony bearing a pack and accompanied by a peasant dressed in coarse garments. Beyond the group is a rude stone hovel at the foot of a steep and rocky range of hills where other habitations are scattered over the slope. The sunlight falls upon the scene from the left and a few luminous clouds float in the upper part of the simple sky.

*Signed at the lower right, S*

*Height, 10½ inches; length, 13½ inches.*



No. 164

ÉMILE VAN MARCKE

FRENCH

1827—1890

600

## CATTLE

THIS is a study of two cows, the one on the right seen in full face, the other in three-quarters view from behind. They are in a diffused sunlight and in relief against a grassy meadow beyond.

*Signed at the lower left, EM. VAN MARCKE.*

*Height, 10 inches; length, 14 inches.*



No. 165

JEHAN GEORGES VIBERT

FRENCH

1840—1902

971

A NEW SUBJECT

A CARDINAL, who is making a visit to the house of a wealthy friend, examines, while he is waiting, a wall decoration suggestive of an amorous incident in song or story. In front of the cardinal, who stands with his back to the spectator, holding his folded biretta in his hands, which are clasped behind him, is a low green sofa, on which the hat and lace mantle of a lady are carelessly thrown.

*Signed at the lower right, J. G. VIBERT.*

*Height, 15 inches; width, 11½ inches.*

*From the ARTIST.*

No. 166

Mlle. ROSA BONHEUR

FRENCH

1822—1899

ROAMING

A YOUNG buck wandering through the forest has halted a moment, startled by some noise, and stands with head upraised looking eagerly to the right. Near him is the rough trunk of a large tree and beyond him a scattered growth of trees and underbrush.

*Signed at the lower left, ROSA BONHEUR, 1875.*

*Height, 14 inches; width, 10½ inches.*

200



No. 166. *Roaming.* By M<sup>lle</sup>. ROSA BONHEUR





No. 167

J. G. MEYER VON BREMEN

GERMAN

1813—1886

1070

### THE FIRST LESSON

A LITTLE girl, lying in her crib, is taking her first lesson in reading from her elder sister who, seated in an armchair beside her, holds a book in both hands and leans lovingly against the little child. Over the group hangs a curtain of pale, striped blue, and light falls upon the little group from the upper left, bringing the figures into relief against a shadowy background.

*Signed at the lower left, MEYER VON BREMEN, 1865.*

*Height, 18 inches; width, 15 inches.*

No. 168

HIPPOLYTE CAMILLE DELPY

FRENCH

Contemporary

325

LANDSCAPE

A QUIET pool of water extends nearly across the picture, leaving a narrow strip of grassy bank in the foreground. On the farther shore a cow is drinking, watched by a peasant woman. Beyond them an irregular clump of trees rises high against the quiet evening sky. In the horizon, on the left, is a rounded hillside against a simple evening sky, and on the right, beyond a clump of tall poplars, is the suggestion of a pleasant villa.

*Signed at the lower right, H. C. DELPY.*

*Height, 11½ inches; length, 21 inches.*

No. 169

JULES DUPRÉ

FRENCH

1811—1889

750

LANDSCAPE

A SHALLOW pool extends across the foreground and on the right is bordered by a broad road which, passing between two groups of large cottages, winds away to the extreme distance, where a small lake, bordered by low hills, sparkles in the sunlight. Cows drink in the water, peasants gather near their doors, and a two-wheeled ox-cart crosses the sunlit road in front of the cottages. On the left a lofty clump of trees covers a large portion of the sky and is reflected in a deep shadow in the pool below.

*Signed at the lower left, JULES DUPRÉ.*

*Height, 11¾ inches; length, 17¾ inches.*



No. 170

142

JEAN CHARLES CAZIN

FRENCH

1840—1900

### A PROVINCIAL TOWN

THIS is a study made in a moderate-sized town in France. A broad street extends across the foreground and leads between two rows of houses to the cathedral, with its twin towers, beyond. The street is partly covered by grass, and on the left a peasant woman, with her basket, is resting by the roadside under a wooden fence which surrounds a group of cottages. The hour of the day is near sunset and a warm glow envelops the landscape.

*Signed at the lower right, J. C. CAZIN.*

*Height, 11½ inches; length, 16 inches.*

*From the ARTIST.*

No. 171

NARCISSE VIRGILE DIAZ DE LA PEÑA

FRENCH

1809—1860

IN THE FOREST

THE motive for this picture is evidently taken from the forest of Fontainebleau, for it shows one of the characteristic glades in this famous resort for artists. On either side of an opening, through which a single figure of a peasant woman is walking, is a dense growth of sturdy forest trees. The sun breaks through an opening in the foliage and strongly accentuates the ground, the tree trunks, and here and there the leafy branches. Through the foliage at the top of the picture is seen the sky, suggesting the presence of luminous summer clouds.

*Signed at the lower left, N. DIAZ, '64.*

*Height, 15½ inches; length, 19½ inches.*

*From LEROY & Co., Paris.*

7600





No. 171. *In the Forest.* By NARCISSE VIRGILE DIAZ DE LA PENA



No. 172

CONSTANT TROYON

FRENCH

1810—1865

752

LANDSCAPE AND CATTLE

FOUR cows, driven by a peasant woman, are wading through a shallow stream in the foreground. Beyond them stands the peasant on a sunlit bit of road which winds about through a wood where trees of various sizes and kinds grow thickly together. On the right a range of mountains rises almost out of the picture, showing a narrow strip of sky above.

*Inscribed at the lower left, VENTE TROYON.*

*Signed at the lower right, C. T.*

*Height, 11½ inches; length, 18½ inches.*

No. 173

HIPPOLYTE CAMILLE DELPY

FRENCH

Contemporary

LANDSCAPE

IN the right foreground is a narrow strip of meadow bordering a quiet river which flows from the left diagonally across and sweeps around past a low point on which stands a large village, overshadowed here and there by lofty poplars. An irregular line of low hills forms the horizon, and the sky, which is nearly covered with clouds, glows in the light of a summer sunset, the tones of which are reflected in the placid surface of the river.

*Signed at the lower right, H. C. DELPY.*

*Height, 13 inches; length, 23½ inches.*



No. 174

HENRI HARPIGNIES

FRENCH

1819—

1700

### A SUMMER'S DAY

Two trees grow on the bank of a narrow stream which flows out of the foreground on the right, and underneath one of these trees a female figure is seated reading a book. On the other side of the stream are grassy fields, and still farther away a line of low hills on the horizon. The sky is a simple luminous tone, broken here and there by suggestions of blue beyond.

*Signed at the lower left, H./HARPIGNIES, '90.*

*Height, 15 inches; length, 22 inches.*

*From ARNOLD & TRIPP, Paris.*

No. 175

PAUL JEAN CLAYS

BELGIAN

1819—1900

675

MARINE

Tossing on the muddy waters of the North Sea, presumably near the mouth of the Scheldt, is a fleet of sailing vessels of various sizes and variety of rigs, the middle one, a barque with topsails, being apparently under tow. The sky is covered with low drifting storm clouds.

*Inscribed at the lower left, VENTE P. J. CLAYS.*

*Height, 13 inches; length, 21 inches.*

No. 176

EUGÈNE LOUIS GABRIEL ISABEY

BRINGING HOME THE WOUNDED

1025

A WOUNDED man has been brought to the *porte cochère* of a large mansion, and, reclining on a stretcher, is surrounded by a wailing group of friends and attentive nurses. On the right stands a lord and his lady and two mounted cavaliers. Above the group the façade and roofs of the mansion rise nearly out of the picture.

*Signed at the lower right, E. ISABEY, '78.*

*Height, 21¼ inches; width, 17¼ inches.*



No. 176. *Bringing Home the Wounded*  
By EUGÈNE LOUIS GABRIEL ISABEY





No. 177

ADRIAN DÉMONT

FRENCH

1851—

210

NIGHT

FROM the foreground a broad country road leads up and over the crest of a hill. On either side are rude cottages roofed with red tiles, in one of which, just over the crest of the elevation, shines a warm light, evidently the goal toward which a fisherman, bearing a laden basket on his shoulders, is turning his steps. The sky is covered with heavy rolling clouds, accentuated near the middle of the picture by a strong gleam of moonlight.

*Signed at the lower right, ADRIAN DÉMONT.*

*Height, 17 inches; length, 21½ inches.*

No. 178

BERNARDUS JOHANNES BLOMMERS

DUTCH

1844—

600

PEELING POTATOES

Water Color

A DUTCH huysvrouw is seated near her kitchen fire engaged in peeling potatoes for the evening meal. Standing opposite her and resting one elbow on a low table is a small lad who is reading a paper while his mother works.

*Signed at the lower right, BLOMMERS.*

*Height, 19½ inches; width, 15 inches.*



No. 178. *Peeling Potatoes.* By BERNARDUS JOHANNES BLOMMERS



No. 179

FRITZ THAULOW

NORWEGIAN

1847—

630

THE RIPPLING BROOK

A RIPPLING stream flows down to the foreground from a sunlit village in the middle distance, where fruit trees in blossom surround the cottages. In the middle distance, on the left, the figure of a peasant is seen at work in his garden.

*Signed at the lower right, FRITZ THAULOW.*

*Height, 18 inches; length, 21½ inches.*

No. 180

JEAN FRANÇOIS RAFFAELLI

FRENCH

1850—

312

AVENUE DE LA RÉPUBLIQUE

THE avenue is crowded with people. In the foreground a fruit woman pushes her cart, and beyond her is a mass of foot passengers, cabs, laden omnibuses, and the confusion of a crowded Paris street. In the middle distance the mansards of a cross street, with the monument of the Republic, form a sky-line against a broad mass of simple gray clouds.

*Signed at the lower right, J. RAFFAELLI.*

*Height, 17½ inches; length, 20 inches.*

No. 181

HIPPOLYTE CAMILLE DELPY

FRENCH

Contemporary

THE HILLSIDE

FROM the right foreground, a steep hillside, partly cultivated and partly waste, extends away to the distance, and on the left is a shallow pond, on the opposite shore of which stands a red-roofed residence surrounded by tall trees. Here and there a few figures enliven the landscape. A boat with a single occupant is floating on the water and a large skiff is drawn up under the steep bank on the edge of the pond. Small clouds, touched by the glow of sunset, are scattered over the sky.

*Signed at the lower right, H. C. DELPY.*

*Height, 12½ inches; length, 23½ inches.*



No. 182

GABRIEL MAX

AUSTRIAN

1840—

### THE ARTIST

THIS is a life-size head of a fair-haired maiden. Her right hand supporting her chin, she inclines her head slightly to one side and raises her eyes with a devout expression. Part of a palette held in her left hand and three brushes are seen at the lower part of the picture, which is surrounded by a painted oval. She wears a light wine-colored mantle around her shoulders and she is crowned with a chaplet of laurel leaves.

*Signed at the upper right, G. MAX.*

*Height, 20½ inches; width, 16 inches.*

525

No. 183

PAUL JEAN CLAYS

BELGIAN

1819—1900

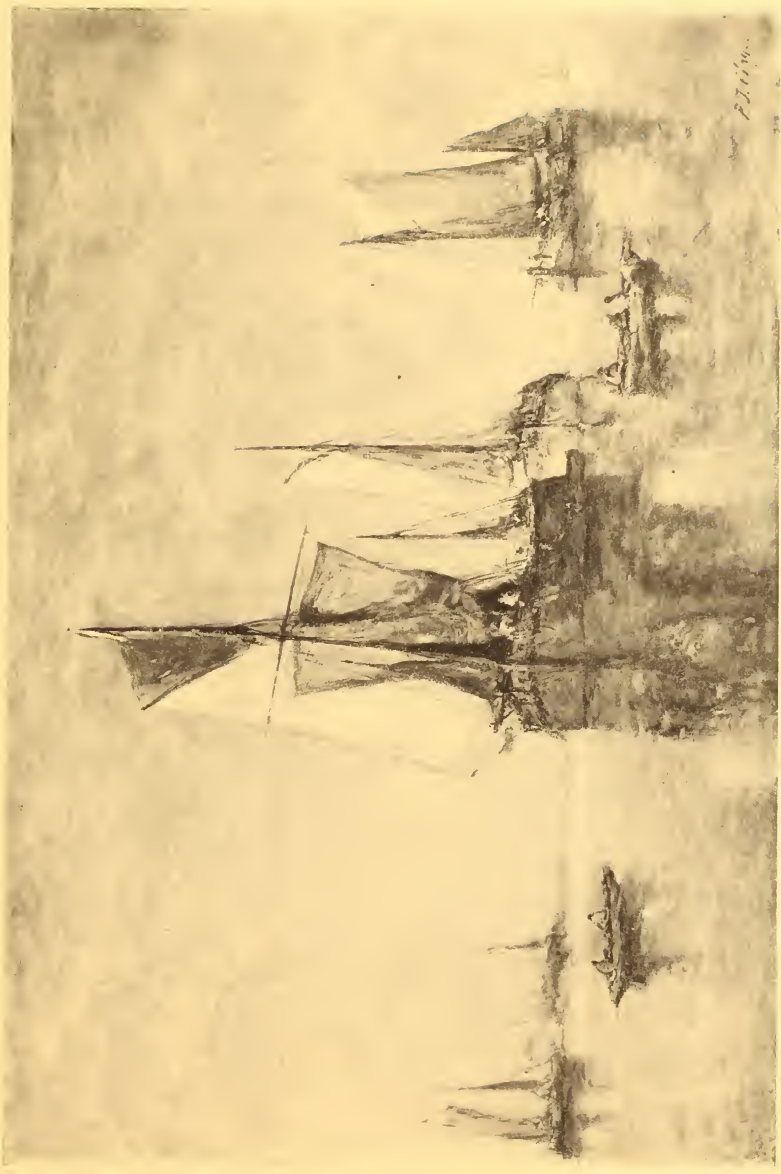
MORNING EFFECT ON THE HOLLAND COAST 130

A GROUP of three bluff-bowed Dutch boats, with colored sails, form the chief feature of the composition, their hulls and rigging reflected in the calm waters of the broad river. In the foreground are two rowboats, one on either side, and on the left, in the distance, are seen a lighthouse on a low point of land and various vessels moored near the shore. The low horizon is lost in the glowing mist which hangs over the water and the sky is covered with a thin veil of light clouds.

*Signed at the lower right, P. J. CLAYS.*

*Height, 16½ inches; length, 24½ inches.*





No. 183. *Morning Effect on the Holland Coast.* By PAUL JEAN CLAYS



No. 184

P. A. J. DAGNAN-BOUVERET

FRENCH  
Contemporary

450

HEAD

Pastel

THIS is a life-size head of a young girl, apparently a study for a decoration, the left hand holding a paint-brush, which is held above her head, and the face is turned toward the upper right, the eyes looking in the same direction. A chaplet of leaves partly hides the hair.

*Signed at the lower left, P. A. J. DAGNAN-BOUVERET.*

*Height, 15 inches; length, 20 inches.*

No. 185

BERNARDUS JOHANNES BLOMMERS

DUTCH

1844—

MENDING FISHING NETS

1000

IN a large stable half a dozen or more Dutch women are seated engaged in mending fishing nets. They are dressed in curious Zeeland costumes, with close-fitting caps, short-sleeved jackets and full petticoats. The light from an open door shines upon the group from the left, accentuating here and there the flesh and the draperies.

*Signed at the lower right, BLOMMERS.*

*Height, 20 inches; length, 26 inches.*



No. 185. *Mending Fishing Nets.* By BERNARDUS JOHANNES BLOMMERS





No. 186

FÉLIX ZIEM

FRENCH

1821—

170

### SUNSET IN VENICE

TALL façades bordering a broad Venetian canal rise on either side of the picture, the row on the right dominated by a lofty tower. The sun is low in the heavens and the warm glow from the sunset sky spreads over the palaces on the right, casting those on the left into deep but luminous shadow. Various craft are moored to the quays on either side, and a gondola, with a single gondolier, is crossing the canal in the foreground.

*Signed at the lower right, ZIEM.*

*Height, 27½ inches; width, 21½ inches.*

JEHAN GEORGES VIBERT

FRENCH

1840—1902

THE BOOKWORM

4000

A CARDINAL in full red robes, carrying a gold-headed stick, stands near an ornate carved and gilded lectern in a rich library, daintily turning the leaves of a book which rests upon a wrought-iron support. Behind the cardinal, on the right, is a figured velvet screen partly concealing a tapestried curtain.

November 17, 1898.

SIR:

Mr. Allard has told me that you would like to have a letter explanatory of a picture which I have lately finished, and of which you have acquired the ownership.

I hasten to respond to your desire. It will be for me a means of thanking you for the honor you do me in condescending to interest yourself in my work.

The picture in question represents the corner of a picturesque library, which does not shine by reason of any elegance, since its sole ornaments are sombre hangings and old furniture of another period; but upon the shelves where the books are arranged, are hidden many treasures.

Behold, well in evidence, supported by the pulpit of an old lectern, the most precious treasure of all, an old Dutch bible, in its primitive binding, not intact, but at least respectable. It is the latest "find," the rarest piece of all, long coveted, haggled over as to price, finally captured and placed in the sanctuary.

In the absence of the master of the house, a friendly visitor has been introduced. He is a Cardinal who himself would seem to be most appreciative of the marvels of the printers' art, for before taking off his mantle, without even taking the time to put down his stick and hat, he has thrown himself upon the old treasure, and is now slowly turning over the leaves.

The point which I have striven to bring out in this painting is the physiognomy of a bibliophile, at gaze before a rare book. There are many passions in those heads, love or envy; but also that nobility which is always given by erudition joined to taste for art.

There, sir, is the explanation of my character sketch. Besides, since you are yourself an amateur, you must know better than anybody else what he is thinking.

Receive, sir, the assurance of my most perfect consideration.

J. G. VIBERT.

*Signed at the lower right, J. G. VIBERT.*

*Height, 16 inches; width, 12½ inches.*

*From the ARTIST.*





No. 187. *The Bookworm.* By JEHAN GEORGES VIBERT





No. 188

FERDINAND ROYBET

FRENCH

1840—

600

### THE SENTINEL

A TALL, youthful cavalier, in the costume of Louis Quatorze, with thigh boots, figured damask doublet, silk breeches and cloak, stands near the entrance of a palace or other public building, his sword held in his right hand, over his right shoulder, and his head turned toward the hilt. The figure, strongly lighted from the upper left, is relieved against a dark background of masonry. On the right are the lower steps of a staircase.

*Signed at the lower left, F. ROYBET.*

*Height, 24 inches; width, 14½ inches.*

No. 189

CONSTANT TROYON

FRENCH

1810—1865

1500

### RETURNING HOME

A LARGE flock of sheep is assembled in the foreground, and behind stands a peasant with his shepherd dog, followed by a donkey with two panniers and a peasant woman rider. The group is in strong effect of sunlight, diminishing in intensity from the foremost animal to the group beyond. On the left is the edge of a forest with trees in full foliage, and beyond, on the right, a clump of rounded trees in the middle distance. The sky is covered with summer clouds, showing here and there tiny spots of blue.

*Signed at the lower left, C. T.*

*Height, 25 inches; width, 20½ inches.*



No. 189. *Returning Home.* By CONSTANT TROYON



No. 190

LOUIS EUGÈNE BOUDIN

FRENCH

1824—1898

1221

LA FALAISE DE BÉNERVILLE

ON the left a rocky promontory slopes down to the sea, where a jagged rocky point extends far out into the water. The quiet glassy bay is dotted here and there with fishing vessels, and, reflecting the tones of the sunset sky, extends away to the extreme distance, where the horizon is lost in a glowing mist. Beyond the promontory, which is crowned with large buildings surrounded by trees, is seen a low hill across the water in the distance.

*Signed at the lower left, E. BOUDIN, '97, 19/9 BENERVILLE.*

*Height, 21½ inches; length, 35½ inches.*

No. 191

JEAN BAPTISTE CAMILLE COROT

FRENCH

1796—1875

2100

CATCHING CRAWFISH

THIS is a forest interior where slender trees grow closely together and the ground is covered with tangled undergrowth. In the right foreground a narrow brook flows out of the picture and the figure of a man with bare arms and legs is kneeling on a rock, apparently catching crawfish in the water. Beyond the figure, and in the extreme distance, is visible a tiny spot of luminous sky seen between the tree trunks, and over the red roof of a small cottage in the upper part of the picture tiny spots of delicate blue show through the foliage.

*Signed at the lower left, COROT.*

*Height, 25½ inches; width, 19½ inches.*

*From the DAVID H. KING, JR., Sale, 1896.*





No. 191. *Catching Crawfish.* By JEAN BAPTISTE CAMILLE  
COROT



No. 192

ANTOINE VOLLON

FRENCH

1833—1900

220

THE DOCKS

THIS is the study of the quay in a French seaport town, with large buildings on the left and a narrow harbor on the right, and a suggestion of many craft moored near the quay. Masses of light clouds float high in the heavens, here and there touched by the sunlight.

*Signed at the lower right, A. VOLLON.*

*Height, 33½ inches; width, 28½ inches.*

No. 193

JEAN BAPTISTE CAMILLE COROT

FRENCH

1796—1875

7700

NYMPHS BATHING

A LARGE group of trees in full foliage rises against a glowing sky on the left and is reflected in a large pool of water which extends across the picture. In the foreground three nymphs are seen near the water's edge, one of them about to enter, and the others engaged in preparing for the bath. On the right is a slender birch tree with feathery foliage, and beyond, and across the pool, is a distant rugged hillside seen against the sunset sky.

*Signed at the lower left, COROT.*

*Height, 39½ inches; width, 30 inches.*

*From the MARY J. MORGAN Collection, 1886, Catalogue No. 56.*



No. 193. *Nymphs Bathing.* By JEAN BAPTISTE CAMILLE  
COROT



No. 194

HIPPOLYTE CAMILLE DELPY

FRENCH

Contemporary

32)

LANDSCAPE

A BROAD river extends across the foreground and is crossed by a series of rough frame-works with fishing traps and nets. On the right a large clump of trees grows on a low bank, the dark mass of foliage reflected in the water, and on the left, across the river, is a pleasant farming country, with a moderate-sized hill extending away in perspective to the distance. The sky is partly covered by storm clouds and the light is concentrated near the horizon.

*Signed at the lower left, H. C. DELPY.*

*Height, 38 inches; length, 53 inches.*

No. 195

CHARLES ÉMILE JACQUE

FRENCH

1813—1894

5-200

### WATERING THE FLOCK

IN the right foreground is a shallow pool at the foot of an irregular grassy slope where willows and other trees grow. A flock of sheep, attended by a small boy and a black shepherd dog, has left the pasture and crowds at the water's edge to drink. The sun shines strongly from the upper left, throwing a shadow on the boy and partly across the flock.

*Signed at the lower left, CH. JACQUE.*

*Height, 32 inches; length, 44 inches.*





No. 195. *Watering the Flock.* By CHARLES EMILE JACQUE



No. 196

HENDRIK VALKENBURG

DUTCH

1826—1896

625

AT HOME

A DUTCH peasant has sought his comfortable cottage home after the labor of the day, and, smoking his pipe, is seated near a small table close by the single window of the room. Opposite, the good vrouw is engaged in grinding coffee for her husband's supper. The group is lighted by a square window in the middle of the picture, through which is seen a garden with the red roof of a cottage beyond.

*Signed at the lower left, H. VALKENBURG, '84.*

*Height, 36½ inches; length, 45 inches.*

No. 197

GEORGES HAQUETTE

FRENCH

Contemporary

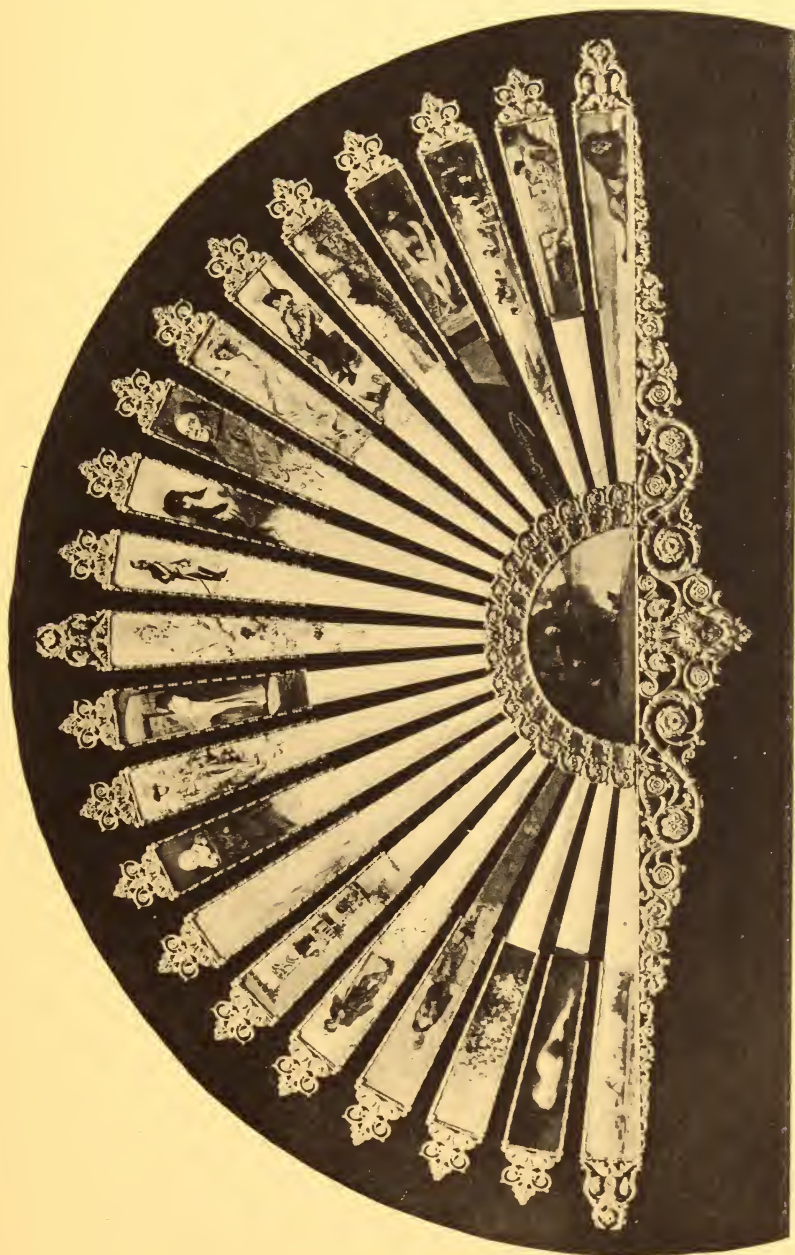
652

### LAUNCHING THE BOAT

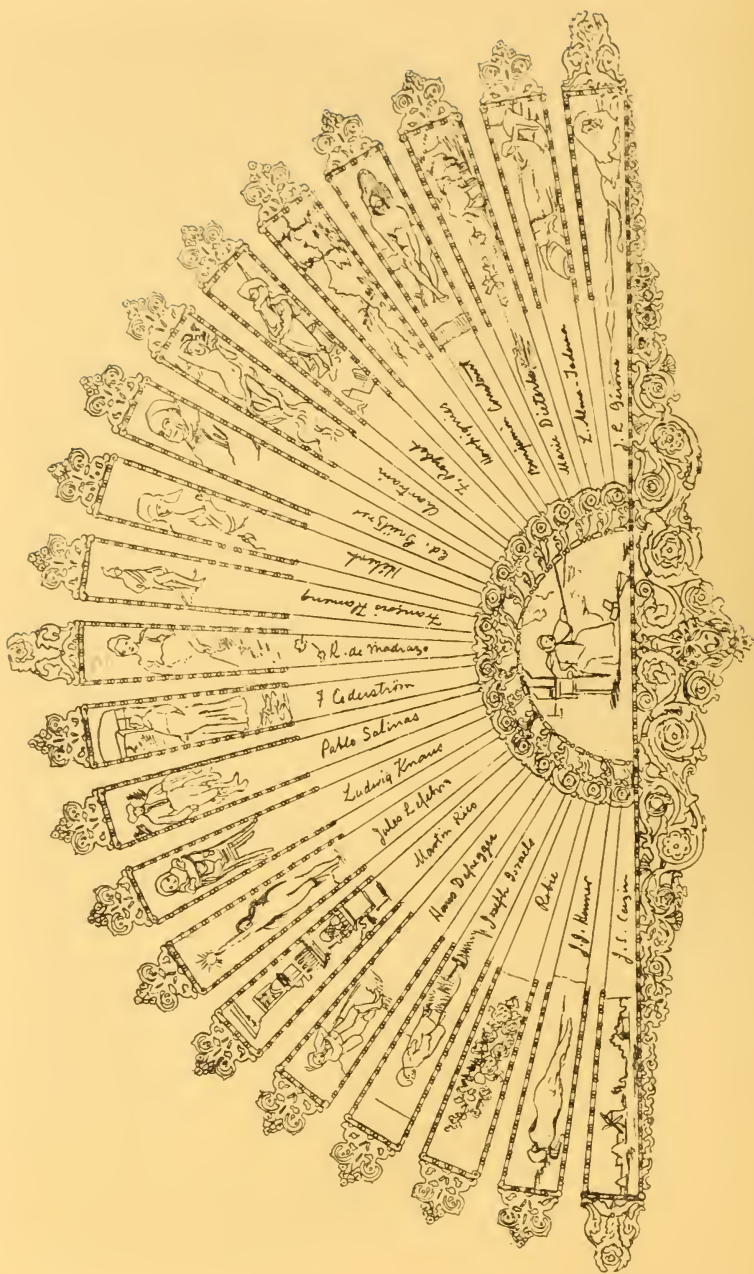
IN the foreground a group of sturdy fisher folk, four men, two women and a small boy, are laboring to launch their heavy row-boat through the surf into the deeper water. An old fisherman pushes vigorously with an oar, and the small boy tugs at a rope in the bow, while the others lift at the gunwales. On the left is a line of lofty headlands, and beyond the group a tossing sea is dotted with fishing craft. The sky is covered with low, drifting rain clouds.

*Signed at the lower left, G. HAQUETTE.*

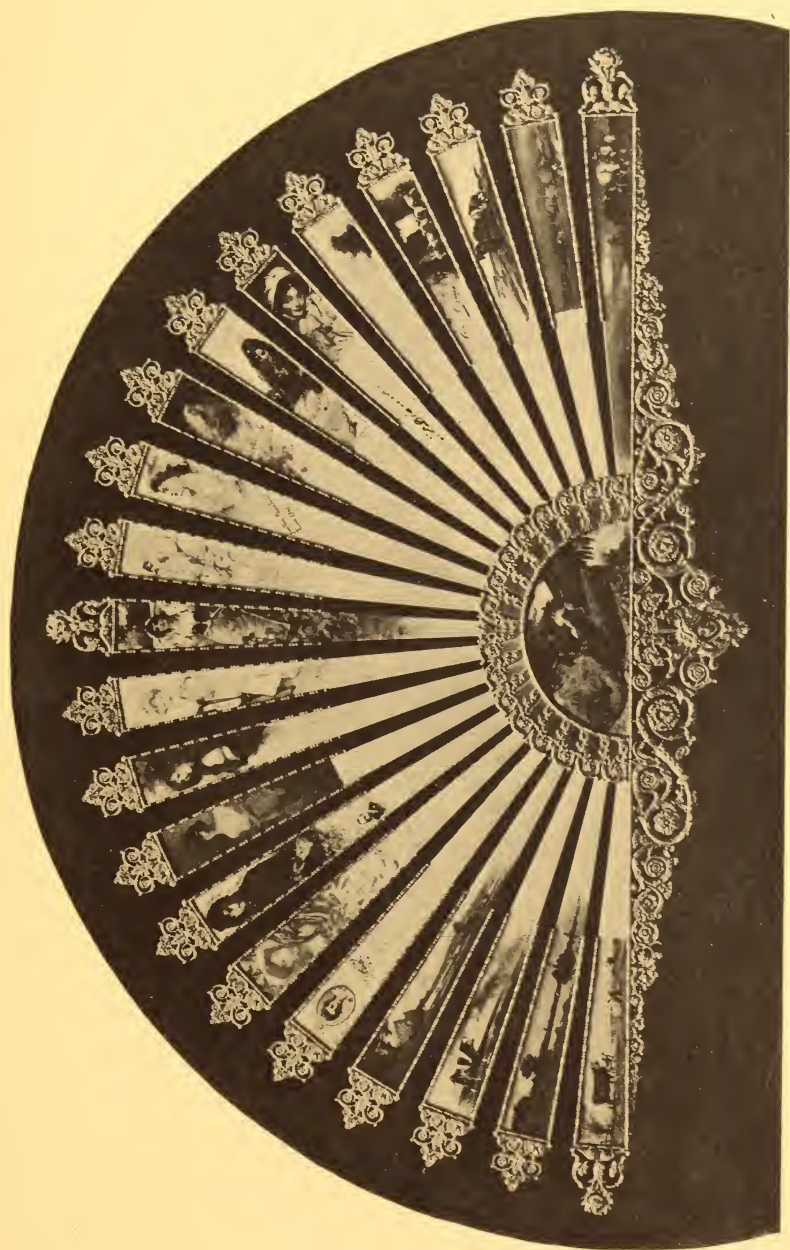
*Height, 33½ inches; length, 47 inches.*



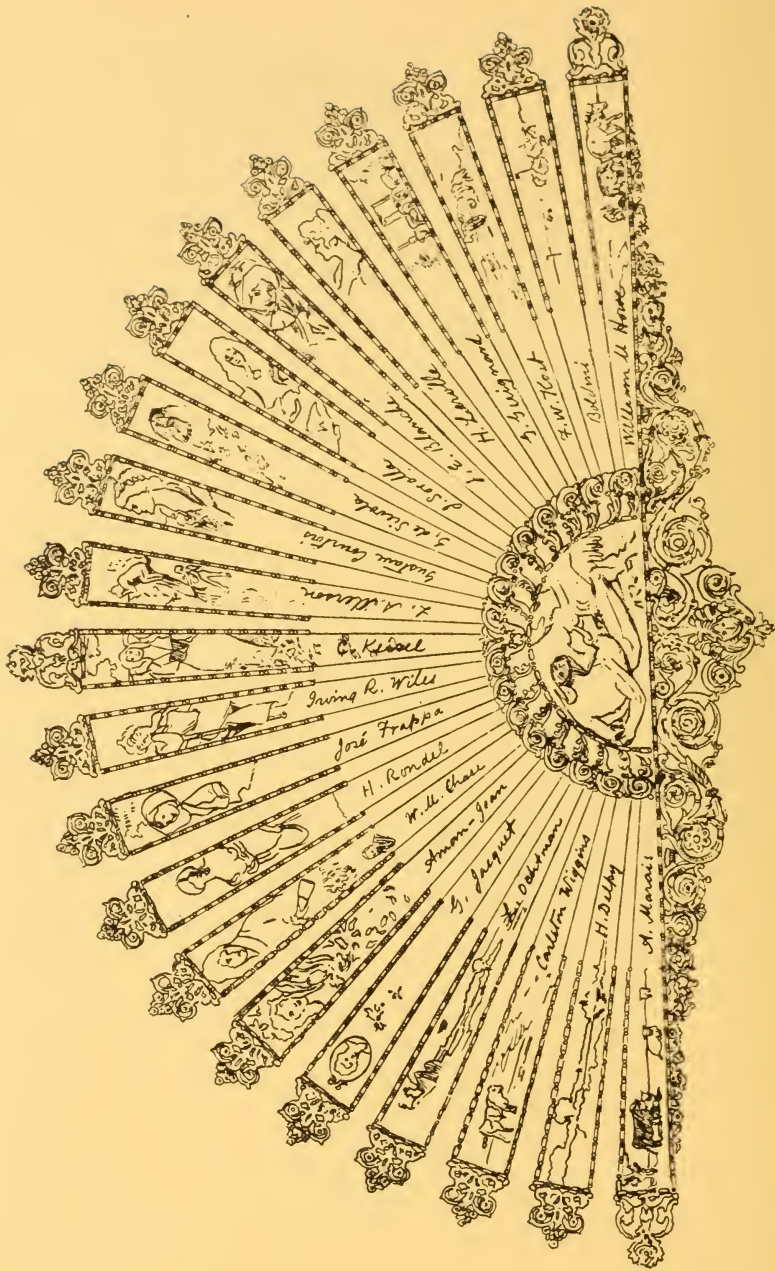
No. 198



No. 198. (Key)



No. 199



No. 199. (Key)



## REMARKABLE ART FANS

THIS unique and remarkable collection of the work of celebrated artists was started by Mr. Alexander Blumenstiel in 1894, and, after tireless energy, completed in ten years. Each blade is painted by a distinguished artist and is a complete picture in itself, carefully carried out by the artist and strikingly individual in its subject and treatment.

The five fans embrace a complete representation of the work of all the modern foreign and American schools. This work can never again be duplicated. Many of the artists have died—among them, Cazin, Henner, Benjamin Constant, Gérôme, Jacob Maris, Boudin, Vibert, Mesdag, Minor, Vollon—and certainly none of the others would ever accept a similar commission to paint on such a restricted space constituting a work so difficult.

The mountings were designed and executed by Tiffany & Co. Suggestions with respect to the mountings were made by Monsieur Madrazo.

No. 198

*ssw*

### ART FAN

IX semicircle, "Cardinal Fishing," by J. G. Vibert.

On blades. Paintings by J. C. Cazin, J. J. Henner, J. B. Robie, Josef Israels, Franz Defregger, Martin Rico, Jules Lefebvre, Ludwig Knaus, Salinas, F. Cederström, R. de Madrazo, François Flameng, A. E. Hébert, Ed. Grützner, Théobald Chartran, Ferdinand Roybet, Henri Harpignies, Benjamin Constant, Marie Dieterle, L. Alma-Tadema, J. L. Gérôme.

## ART FAN

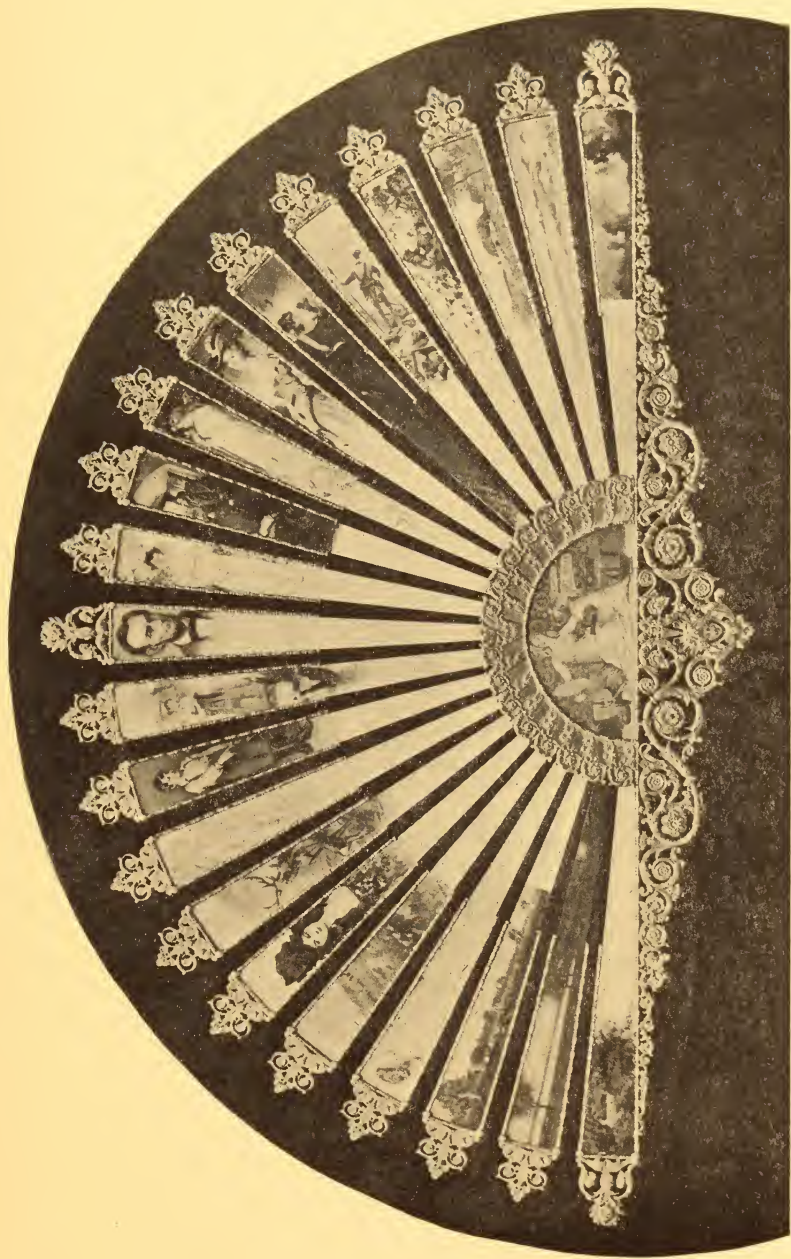
IX semicircle, "Prometheus Bound," by Jean Paul Laurens.

On blades. Paintings by A. Marais, H. C. Delpy, Carleton Wiggins, Leonard Ochtman, G. Jaquet, E. Aman-Jean, W. M. Chase, H. Rondel, José Frappa, Irving R. Wiles, Conrad Kiesel, Luc Olivier Merson, Gustave Courtois, G. de Sievolla, J. Sorolla, J. G. Blanche, H. Lerolle, G. Guignard, Frederick W. Kost, G. Boldini, William H. Howe.

## ART FAN

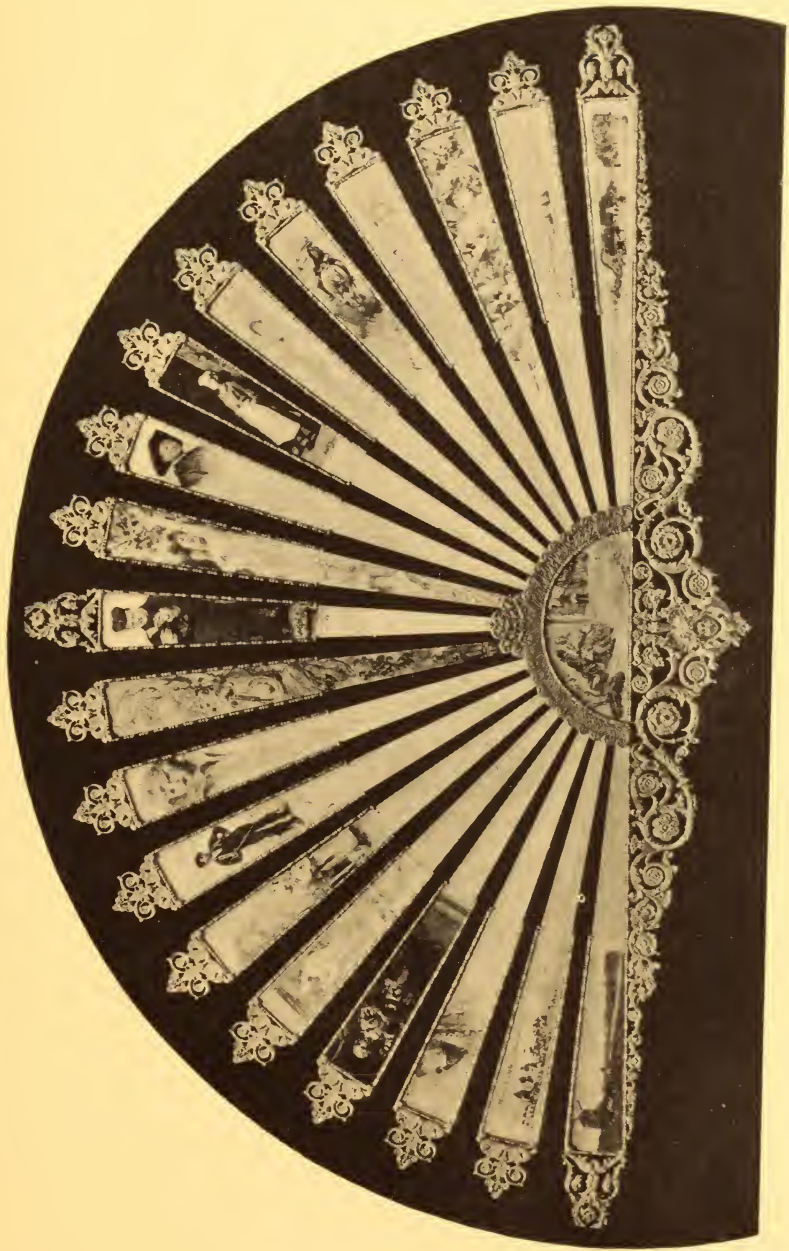
IX semicircle, classical figure by E. H. Blashfield.

On blades. Paintings by Fritz Thaulow, J. Francis Murphy, George H. Bogert, J. Carroll Beckwith, H. W. Ranger, Albert Lynch, H. W. B. Davis, H. Siddons Mowbray, J. G. Brown, E. Débat-Ponsan, Francis B. Carpenter, Henri Gervex, Toby Rosenthal, G. F. B. Church, Hubert Herkomer, P. Carrière-Belleuse, Francis Tattegrain, Paul Meyerheim, L. Paul Dessar, B. W. Leader, Robert C. Minor.

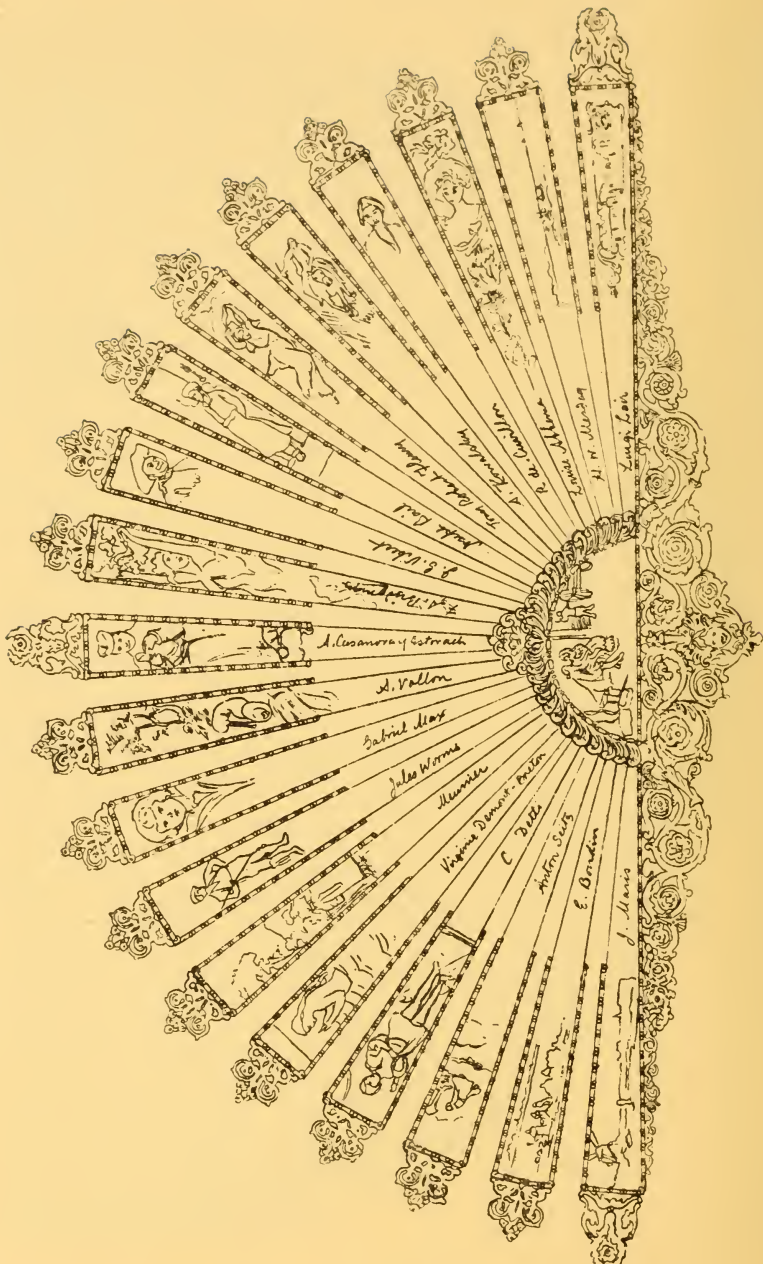


No. 200





No. 201



No. 201. (Key)

No. 201

81W

ART FAN

IX semicircle, "Scene from 'Manon Lescaut,'" Maurice Leloir. On blades. Paintings by Jacob Maris, E. Boudin, A. Seitz, C. Detti, Virginie Démont-Breton, C. Munier, Jules Worms, Gabriel Max, Antoine Vollon, Antonio Casanova y Estorach, Frederick A. Bridgman, J. G. Vibert, Joseph Bail, Tony Robert-Fleury, Alfred Kowalski, R. de Cuvellon, Louise Abbema, Hendrik Mesdag, Luigi Loir.

No. 202

126W

ART FAN

IX semicircle, "Children Gathering Flowers," by Ludwig Knaus. On blades. Paintings by Carolus Duran, Fantin-Latour, Jean Béraud, P. J. Clays, H. Kaulbach, P. Bourgaime, José Gallegos, F. H. Kaemmerer, E. Berne-Bellecour, D. Ridgway Knight, J. Benlître, Madeleine Lemaire, Anton von Werner, Léon Perrault, Henry Mosler, V. Chevilliard, Buchbinder, José Domingo, Julien Dupré, L. Eugène Lambert, Félix Ziem.

No. 203

CHARLES FRANÇOIS DAUBIGNY

FRENCH

1817—1878

1878

LE PARC DES MOUTONS

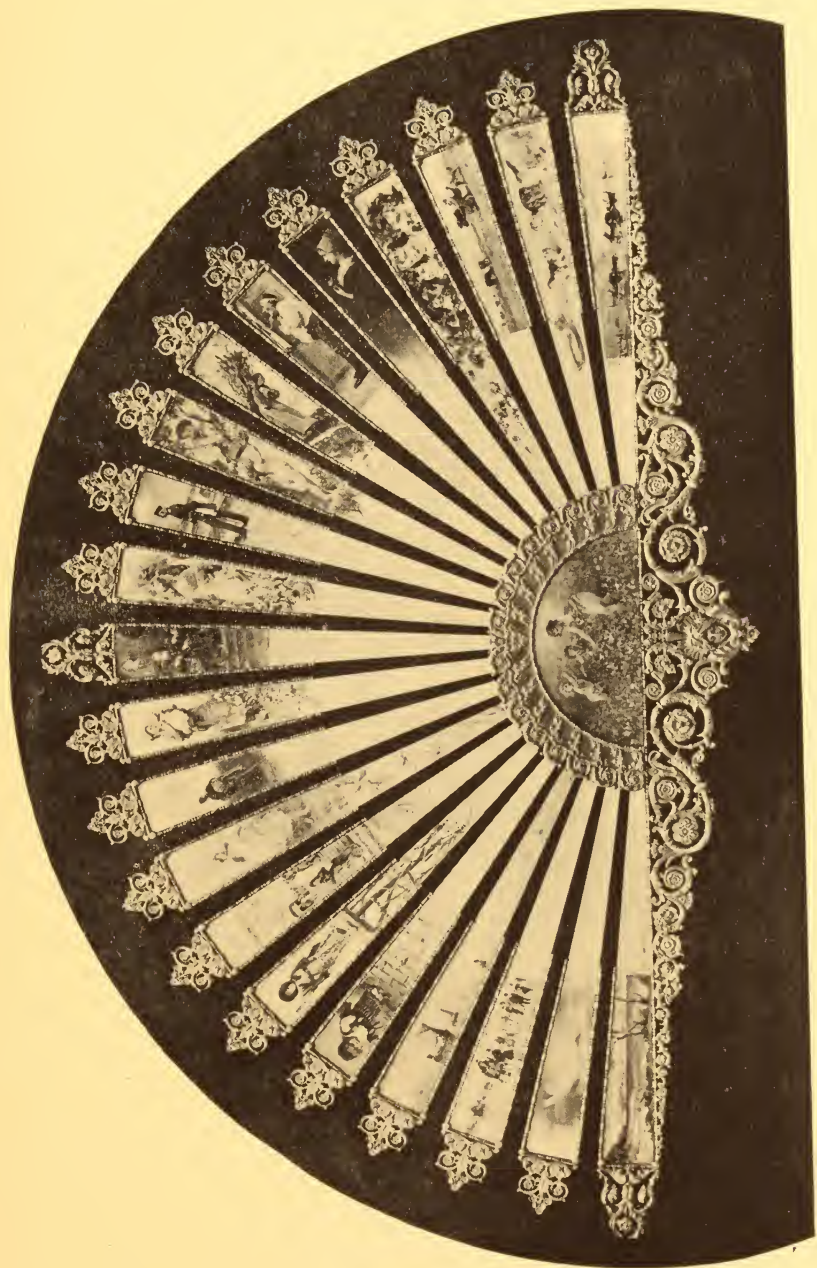
A SHEPHERD with two black dogs is driving a large flock of sheep out of an enclosure through a gate into the broad pastures beyond. On the left, in the middle distance, is a large copse with a single building overshadowed by the trees, and on the right, low in the heavens, the full round disk of the harvest moon is shining, casting a ruddy reflection on the plain below. Through the thin mist which covers the sky a few stars shine here and there.

This picture and the following one, "Early Morning," were purchased at the sale of the effects of the widow of the artist after her death. Mr. D. W. Tryon, the well-known landscape painter, a few weeks before Daubigny's death, which occurred on February 19, 1878, visited his studio and saw these two large pictures on the easles. Mr. Tryon in speaking of his visit says: "Both were noble examples of his work and made a deep impression upon me. I told him they seemed an advance over all his previous pictures. He seemed much pleased and said he hoped as much, adding, 'They are for my family.' I asked if they were not for sale, and he replied: 'They are both too large and too bold to find a purchaser; all my best work remains with me and are *pour la famille*.'"

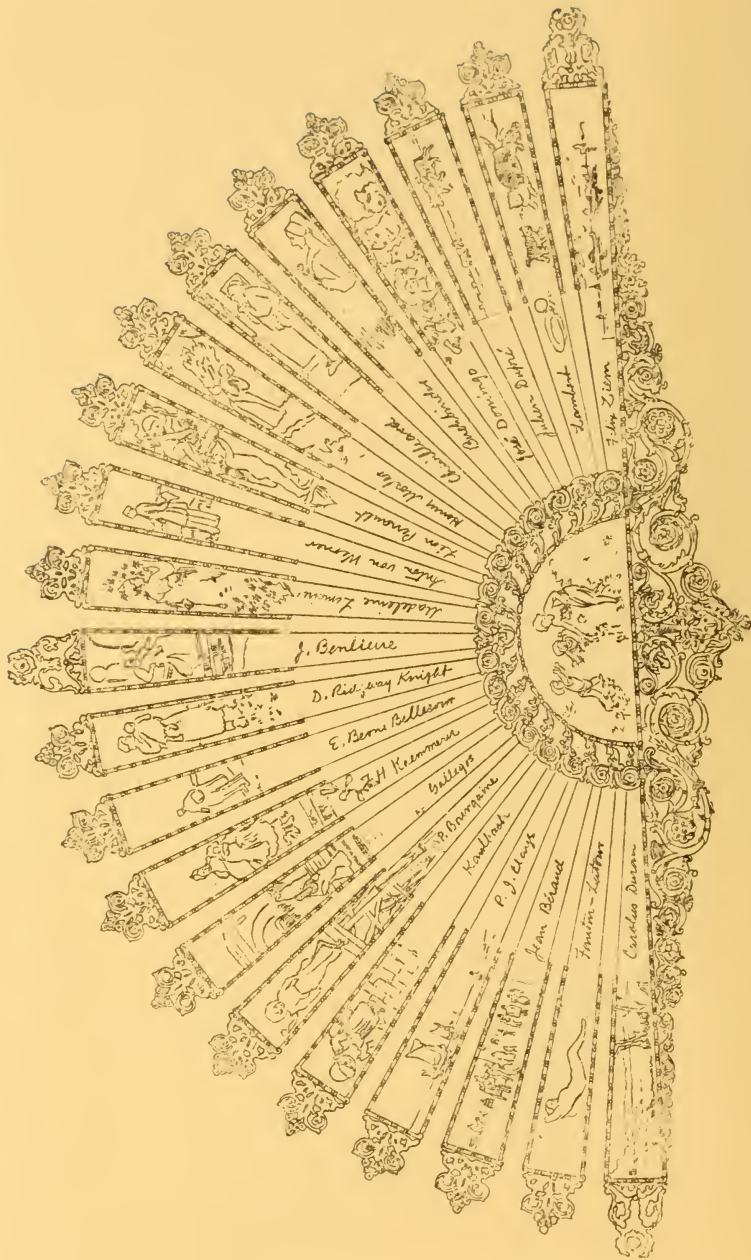
*Stamped at the lower left, C. D.*

*Height, 67 inches; length, 120 inches.*





No. 202



No. 202. (Key)



No. 203. *Le Parc des Moutons.* By CHARLES FRANÇOIS DAUBIGNY



No. 204

CHARLES HARRY EATON

AMERICAN

1850—1901

THE SHIAWASSEE RIVER

A BROAD, placid river, in which grow water-lilies and river plants in abundance, sweeps from the foreground around to the left and then to the right until it disappears behind a low point crowned with large trees. An irregular rank of rounded trees forms the horizon, and across a low meadow a small area of luminous sky is visible. From this point to the zenith rises a bank of gray clouds.

*Signed at the lower right, C. HARRY EATON.*

*Height, 28 inches; length, 42½ inches.*

No. 205

CHARLES FRANÇOIS DAUBIGNY *18w*

FRENCH

1817—1878

### EARLY MORNING

A PEASANT man and woman, carrying rude haymaking implements, are walking along a sandy road which leads from the right foreground down a gentle declivity to a broad, richly cultivated plain where a stream meanders around between the coppices and meadows, and the spire of a church rises against the horizon in the distance. In the left foreground is a large heap of manure near a thatched farm building which rises out of the picture, and here a number of fowl are seeking their morning meal. A gamecock, joyful at the coming of the dawn, stands crowing lustily on the summit of the heap. The sky is covered with fleecy clouds, the light concentrated near the horizon, where the dawn is breaking, and the morning star shines high in the heavens at the upper left of the composition.

*Stamped at the lower left, C. D.*

*Height, 58 inches; length, 94 inches.*



No. 205. *Early Morning.* By CHARLES FRANCOIS DAUBIGNY







No. 206

EVERT J. VAN BOKS

BELGIAN

1838—

435

### CORPUS DELICTI

THIS is a little comedy in a bourgeois household. An indignant old gentleman and his wife have discovered in the drawing-room the képi of a French soldier, and have summoned the servants to explain the mystery. The cook, the housemaid, the butler and the nurse are equally indignant and express by various attitudes and gestures their refutation of the charge.

*Signed at the lower right, E. J. BOKS, ANTWERPEN, 1878.*

*Height, 30¼ inches; length, 44½ inches.*

No. 207

CARL MARR

AMERICAN

1858—

3w

PEACE AND WAR

A MEDIAEVAL shepherd taking his ease in the shadow of a small boulder on a grassy slope, surrounded by his flock and attended by his faithful shepherd dog, is startled by the tramp of a horse, and, looking up, sees a knight in full armor mounted upon a sturdy white charger proceeding, lance in hand, along the crest of the hill. Beyond the knight on the left a distant line of hills forms the horizon. The sky is covered with an almost unbroken mass of luminous clouds.

*Signed at the lower right, CARL MARR, MÜNCHEN, '86.*

*Height, 41½ inches; length, 66 inches.*

AMERICAN ART ASSOCIATION,

MANAGERS.

THOMAS E. KIRBY,

AUCTIONEER.

170110

# ARTISTS REPRESENTED AND THEIR WORKS

	CATALOGUE NUMBERS
ADAN, LOUIS EMILE, The Sly Butler	18
ARNTZENIUS, H. P., Street Scene	16
BERAUD, JEAN, Rue de la Paix	76
BENRE-BELLECOUR, E., Soldier with Flowers	32
BLOMMERS, BERNARDUS JOHANNES, Industry	54
Peeling Potatoes	178
Mending Fishing Nets	185
BOKS, EVERT J. VAN, Corpus Delicti	206

BONHEUR, M<sup>L</sup>LE. ROSA,

Cattle	4
Sketches	6
Sketches	8
A Black Sheep	29
The Horse	63
The Horse Fair	110
Drawing	113
The Quarry	128
Roaming	166

BOUDIN, LOUIS EUGÈNE,

At Villerville	9
Sea and Sky	10
A Breton Interior	14
Landscape	28
In the Harbor	58
On the Shore	91
Sketches	114
Dordrecht	115
Sunset	118
After the Storm	119
Brittany Interior	140
La Falaise de Bénerville	190

BOUGUEREAU, WILLIAM ADOLPHE

Female Figure	112
---------------	-----

BRETON, JULES ADOLPHE,

Returning Home	66
----------------	----

## CASANOVA Y ESTORACH, ANTONIO,

Head	21
The Test	33
The Musician Cardinal	62
Testing the Wine	70
Testing the Wine	124
Two Monks and a Cardinal	127
The Cardinal and the Monk	132
The Gourmand	150
A Good Story	155

## CAZIN, JEAN CHARLES,

The Brook	81
Brittany Landscape	135
Landscape	137
A Provincial Town	170

## CHASE, WILLIAM M., N.A.,

Carmencita	104
------------	-----

## CLAYS, PAUL JEAN,

Calm near Rotterdam	52
Marine	60
A Dutch Fishing Boat	71
Boats Leaving Ostend	144
Along the Quay	152
Marine	175
Morning Effect on the Holland Coast	183

## COOMANS, JOSEPH,

Fishing	82
---------	----

COROT, JEAN BAPTISTE CAMILLE.	
Catching Crawfish	191
Nymphs Bathing	193
COULAND, M.	
The Barnyard	24
COURBET, GUSTAVE,	
A Swiss Scene	48
The Surf	92
DAGNAN-BOUVERET, P. A. J.,	
Head	184
DAUBIGNY, CHARLES FRANCOIS,	
A Country Road	160
Le Parc des Moutons	203
Early Morning	205
DE BOCK, THEOPHIL H.,	
Landscape	143
DEFREGGER, FRANZ VON,	
Head	73
DELPY, HIPPOLYTE CAMILLE,	
Landscape	38
The Backwater	40
Landscape	168
Landscape	173
The Hillside	181
Landscape	194

DEMONT, ADRIAN,	
Night	177
DE PENNE, CHARLES OLIVIER,	
The Meet	123
DETTI, CESARE,	
A Water Excursion	51
DIAZ DE LA PENA, NARCISSE VIRGILE,	
Flowers	68
Landscape	120
In the Forest	171
DIETERLE, MARIE,	
Landscape and Cattle	88
DOMINGO, JOSE,	
The Cabaret	61
DUPRE, JULIEN,	
Harvest	95
DUPRE, JULES,	
Landscape	169
EATON, CHARLES HARRY,	
The Shiawassee River	204
ECHTLER, ADOLF,	
The Repentant Sinner	41

ESBENS, E.,	
At the Palace Gate	12
The Palace Guard	19
FANTIN-LATOUR, I. H. J. T.,	
Figure	133
Carnations	157
FLAMENG, FRANCOIS,	
Information	75
FORTUNY, MARIANO,	
Courtyard of House in Madrid	50
FRERE, EDOUARD,	
Mother and Child	57
GABRIEL, F.,	
Landscape	11
GEROME, JEAN LEON,	
Drawing in Red Chalk	7
The Sentinel	35
The Sentinel at the Sultan's Tomb	65
The Caravan	151
GROLLERON, PAUL LOUIS,	
The Skirmish	146
HAGBORG, AUGUSTE,	
Home from Harvest	101



HAQUETTE, GEORGES,		
Launching the Boat		197
HARPIGNIES, HENRI,		
Springtime		30
A Summer's Day		174
HART, JAMES M., N.A.,		
Summer		22
HEILBUTH, FERDINAND,		
Summer		98
HENNER, JEAN JACQUES,		
Head		72
A Head		130
Midsummer		138
Head		154
Asleep		158
Andromeda		159
INNESS, GEORGE, N.A.,		
The Last of the Mohicans		97
ISABEY, EUGENE LOUIS GABRIEL,		
After the Storm		55
Marine		77
Bringing Home the Wounded		176
ISRAELS, ISAAC,		
Street Scene		5

ISRAELS, JOSEPH,	
Pencil Drawing	111
JACQUE, CHARLES EMILE,	
Idyl	117
Hens	125
Poultry	134
Watering the Flock	195
JACQUET, GUSTAVE JEAN,	
Meditation	74
Head	126
JETTEL, EUGENE,	
Returning	84
JONGKIND, JOHN BARTHOLD	
A Dutch Canal	116
KAEMMERER, FREDERIK HENDRIK	
Fishing	90
After the Ball	145
KOEKKOEK, BAREND CORNELIS,	
Skating Scene	39
KOST, FREDERICK W., A.N.A.,	
Night	87
KRAY, PROFESSOR WILHELM,	
Psyche	105

LAMBERT, LOUIS EUGENE	
Cat and Kittens	49
LEFEBVRE, JULES JOSEPH,	
The Fruit Seller	102
Pandora	107
LELOIR, LOUIS ALEXANDRE,	
The Guitar Player	121
LELOIR, MAURICE,	
The Harvest Festival	106
LEROLLE, HENRI	
A French Village	94
LHERMITTE, LEON AUGUSTIN,	
The Pond	80
LICHTENAUER, JOSEPH MORTIMER	
Head	147
LOIR, LUIGI,	
Paris Street Scene	59
LYNCH, ALBERT,	
A Drawing-room Entertainment	13
An Evening Call	15
MARIS, JACOB,	
On the Zuyder Zee	136

MARR, CARL,	
Peace and War	207
MAX, GABRIEL,	
The Artist	182
MENZEL, ADOLPH,	
Sketches	1
Three Heads	2
MEYER VON BREMEN, J. G.,	
The First Lesson	167
MILLET, JEAN FRANCOIS,	
Wrestlers	108
A French Villa	109
La Manche	109
MOSLER, HENRY, A.N.A.,	
Returning Home	86
The Faggot Gatherer	141
NEUVILLE, ALPHONSE MARIE DE,	
Marching across the Desert	3
The Sentinel	153
OCHTMAN, LEONARD,	
Landscape	23
PASINI, ALBERTO,	
Market Scene at Constantinople	83

PASSINI, LUDWIG,	
Head	122
PERRAULT, LEON BAZILE,	
Maternal Affection	99
The Grape Gatherer	100
PIOT, ETIENNE ADOLPHE,	
Head	36
POKITONOW, IVAN,	
The Gardeners	31
RAFFAELLI, JEAN FRANCOIS,	
After a Walk	37
Avenue de la République	180
REYNOLDS, SIR JOSHUA,	
Head	46
RICO, MARTIN,	
A Bridge at Venice	69
Rio Santa Marina	85
ROBIE, JEAN BAPTISTE,	
Roses	27
Flowers	34
ROUSSEAU, THEODORE,	
Sunset	67

ROYBET, FERDINAND,	
The Sentinel	188
SCHREYER, ADOLF,	
The Desert	64
A Moorish Horseman	162
Arabian Horseman	163
SIMON, L.,	
Landscape	17
SIMONS, P. MARCIUS,	
The City of Ophir	103
SWAN, JOHN M., A.R.A.,	
Lioness and Foxhound	79
TAMBURINI, ANTONIO,	
Threading the Needle	20
TEN KATE, M.,	
Children at Play	26
THAULOW, FRITZ,	
Green-houses	43
The Brook	53
The Rippling Brook	179
THOREN, OTTO DE,	
Returning from Harvest	96

TOULMOUCHE, AUGUSTE,	
Love's Token	148
TROYON, CONSTANT,	
Landscape and Cattle	172
Returning Home	189
VALKENBURG, HENDRIK,	
At Home	196
VAN MARCKE, EMILE,	
Landscape and Cattle	56
Cattle	164
VARIOUS,	
Art Fan	198
Art Fan	199
Art Fan	200
Art Fan	201
Art Fan	202
VIBERT, JEHAN GEORGES,	
The Artist Cardinal	139
The Cardinal	156
A New Subject	165
The Bookworm	187
VOLLON, ANTOINE,	
Flowers and Fruit	42
Still Life	149
Still Life	161
The Docks	192

WIGGINS, CARLETON, N.A.,	
The After Glow	25
WILSON, RICHARD,	
English Landscape	44
WORMS, JULES,	
Le Pourboire	45
The Spanish Fortune Teller	89
A Dios	142
WUNNENBERG, CARL,	
The Peace Offering	93
ZIEM, FELIX,	
Constantinople	47
The Grand Canal	78
Venice	129
Night on the Lagoon	131
Sunset in Venice	186













